

GHA. Info

RNI No.: UPBIL/2013/50547

'we reflect your excellence'

www.ghaglassmagazine.com

VOL. 12, ISSUE-2, APRIL-JUNE 2024

INDIA's Fast Growing Magazine on Architectural Glass & Architectural Hardware



IS 2553: PART 1



CM/L 9100182570

SHIRIRAM TOUGHENED GLASS PVT. LTD.

- Toughened Glass
- Insulated Glass
- Laminated Glass



AUTHORISED DEALER :



IMPORTED GLASS

- Fluted Glass
- Antique Mirror
- Glass Blocks
- Figured Glass
- Reflective Glass
- Acid / Frosted Glass
- Acid Titanium Glass
- Deep Acid Etched Glass
- Light Acid Etched Glass
- Silk Screen Printing Glass
- Back Painted / Lacquered Glass

SHIRIRAM TOUGHENED GLASS PVT. LTD.

Mfg. Toughened, Insulation & Lamination.

Plant : 7th Mile Stone, Gohana Road, Distt. Jind-126102 (Hry.)
E-mail: shiramtuff@gmail.com
Mob.: 9996588815, 16, 18

HARYANA GLASS WORKS

Stockist of All Types of Glasses

Bank Road, Ram Rai Gate, Distt. Jind-126102 (Hry.)
E-mail : haryanaglassworks@gmail.com
Mob.: 9896051024, 9355051025

RAZA MIRROR INDUSTRIES

Pvt. Ltd.

Eastern India's Biggest
Glass Importers &
Stockists

2A Kaviraj Row
Kolkata - 700073
Ph : 09830018811
Zahid@agoverseas.com

TRUCK & DIRECT PORT DELIVERY AVAILABLE



A M S G C O M P A N Y

PROVIDING
SAFETY BEYOND
 IMAGINATION
 THROUGH INNOVATION
 AND TECHNOLOGY.



TOUGHENED
GLASS



INSULATED
GLASS



LAMINATED
GLASS



SOLAR
GLASS

Birkan Engineering Industries Pvt. Ltd.

S-4,6,8 & 10 Site-IV Sahibabad Industrial area, Ghaziabad -201010, (U.P.) INDIA

Call : +91-9999387854 Ph. : +91-120-4225901 | 02 | 04

E-Mail : sales@birkanengg.com

Web : www.birkanengg.com

Follow Us On..



1ST HAND AUTHORIZED SELLER OF XINFU PVB IN INDIA

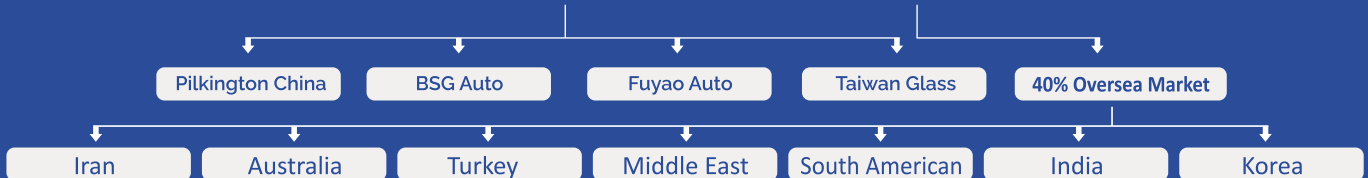


- 3 Production Lines in China
- With Capacity of 6 Million Square meters
- **Architecture grade, Automotive grade, Solar grade**
- Transmittance 91%

Best Production Facility

- | | |
|--|-----------------------|
| Loss in weight Feeder | -- Brabender Germany |
| Screen Changers and Melt Pump | -- Maag, Switzerland, |
| Extrusion Die | -- CLOEREN USA, |
| The Online thickness scanner, Automatic gauge Control (AGC) Systems. | |
| Online scanning Moisture Tester | -- Honeywell USA, |
| The online surface vision test system | -- ISRA Germany, |

XINFU CUSTOMER MAIN MARKET



BLG INTERNATIONAL PVT. LTD.



FROM THE HOUSE OF
LAKSHMI FLOAT GLASS LTD.

SUPPLY
ALL OVER INDIA

Displayed at :

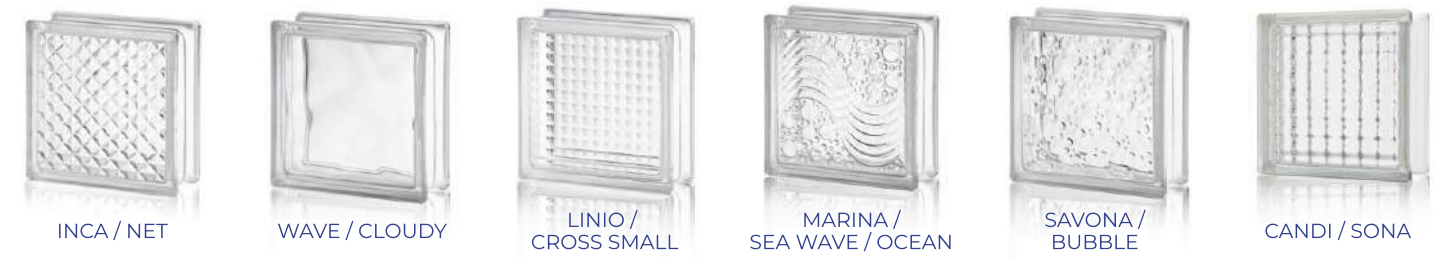
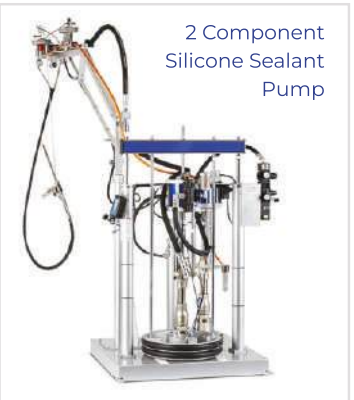
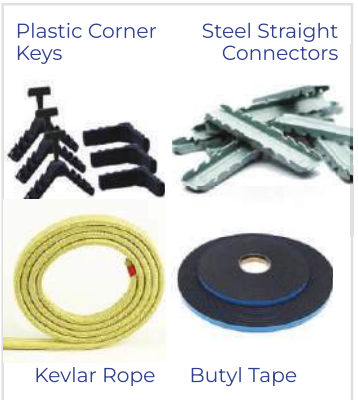
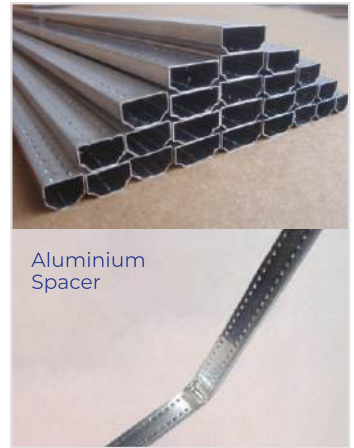
Redg. Office : A-2/30-31 Floor W.H.S.,
DDA Marble Market, Kirti Nagar, New Delhi
Mumbai Office : L-135, Midc, Taloja, Raigarh,
Maharashtra, Mumbai-410208, INDIA

Contact us @

adityagupta@blginternational.in,
www.lakshmifloat.com, sales@blginternational.in



Whatsapp us:
+91 99562 95454



OUR PRODUCTS

PVB | EVA | VACUUM SILICONE BAGS | TEFLON MESH | FABRIC | INSULATING GLASS SILICONE SEALANT | FENZI BUTYL
 玻璃密封胶 | 丁基胶 | 真空硅胶袋 | 特氟龙网 | 织物 | 隔热玻璃密封胶 | 芬齐丁基
 GLASS BLOCKS | FLOAT GLASS | MIRROR BULLET RESISTANT GLASS | PROCESSED GLASS & PATTERN GLASS | BUTYL TAPE | GLASS SEPARATOR
 玻璃砖 | 浮法玻璃 | 防弹镜玻璃 | 加工玻璃及图案玻璃 | 丁基胶 | 玻璃分离器
 GLASS PROCESSING TOOLS | GLASS PROCESSING MACHINES | **SentryGlas**[®] | **Trosifol**[®] | **ExtraStiff**[®] | **Butacite G**[®]

BLG INTERNATIONAL PVT. LTD.
FROM THE HOUSE OF
LAKSHMI FLOAT GLASS LTD.

SUPPLY
ALL OVER INDIA

Displayed at :
Redg. Office : A-2/30-31 Floor W.H.S.,
DDA Marble Market, Kirti Nagar, New Delhi
Mumbai Office : L-135, Midc, Talaja, Raigarh,
Maharashtra, Mumbai-410208, INDIA

Contact us @
adityagupta@blginternational.in,
www.lakshmifloat.com, sales@blginternational.in

Whatsapp us:
+91 99562 95454

BKMe

The art of float glass cutting since 1957...

343BKM
BOTTERO



we cut glass

Designed for glassmakers who want to evolve their business by adopting automated and flexible float cutting systems, **BKMe** float cutting tables offer both the uncompromised high quality and long lifetime typical of **Bottero S.p.A.** products with an easy-to-use approach for the operator.

Model	Max Glass Size
343BKMe-P	4200 x 2800 mm
343BKMe-M	5100 x 3300 mm
343BKMe-J	6100 x 3300 mm
343BKMe-XJ	6100 x 3800 mm

Sales reference:
Davide Peano
Area Manager - Flat Glass
davide.peano@bottero.com

Features

- Windows interface equipped with windows 10 PC
- Belts are used to easily move the glass from loader to cutting table and from cutting table to breakout table once scored
- Automatic selection of the correct pressures accordingly to the thickness reading detected from the cutting head
- Automatic lubrication accordingly from the glass thickness
- Shape scanner able to scan, modify and cut any shapes detected from the optical fiber
- Shape library with wide choice of customizable special shapes to meet all customer needs
- Optimizer software onboard that can sort any combination of cutting sizes, output the best cutting scheme and improve the cutting rate
- Automatically production statistics helpful for production management and performance evaluations, such running time, cutting volume, cutting wheel life, ecc...
- Automatic diagnosis function



we • glass
www.bottero.com

Solar Glass Addicted



we grind glass

The **Bottero** round edged two-sided machines are the ideal machines for processing at high production rates, typical of the household appliance, automotive, industrial refrigeration, TV screen and solar panel production sectors.

In these contexts, where the demand for productivity is accompanied by the need for reliability and automation, the solutions offered by **Bottero** are distinguished by having been chosen by some of the largest industrial groups in the world for the implementation of plants that can treat thousands of square metres of product per day.

The machines can be adapted to one's own production requirements thanks to the possibility of choosing not only the number of spindles but the grinding wheel configuration as well. On demand, the double edger can be equipped with a corner dubbing system, consisting of two peripheral wheels (one on the each side) which process the four corners of the glass.

There are three types of corner dubbing systems available:

- Pneumatic system up to 8 m
- Pneumatic system up to 12 m
- Servo assisted system up to 20 m

In the HP versions, an inverter controls the motors of the diamond spindles, allowing their wheels to rotate up to 4200 rpm.

Highlights:

- Speed max 20 m/min,
- Reliable for 24/7 operations,
- Approved by major solar glass producer

Sales reference:

Daive Peano

Area Manager - Flat Glass

davide.peano@bottero.com

we • glass
www.bottero.com





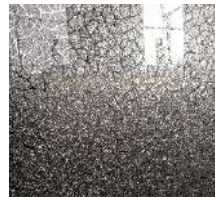
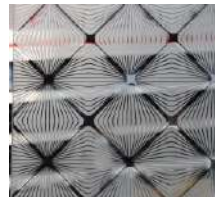
PRIME MAN GLASS

Deals In All Types Of Glass And Mirror

**CLEAR FLOAT GLASS
ICE FLOWER GLASS
VENETIAN MIRROR
ANTIQUE MIRROR
GLASS MOSAICS
GLASS BLOCKS
FIGURED GLASS**

**REFLECTIVE GLASS
V - GROOVE GLASS
ACID / FROSTED GLASS
FANCY / BATH MIRROR
ACID TITANIUM GLASS
DEEP ACID ETCHED GLASS
LIGHT ACID ETCHED GLASS**

**ULTRA CLEAR SILVER MIRROR
SILK SCREEN PRINTING GLASS
COLOR MIRRORS 1.5MM - 5MM
ALUMINIUM MIRROR 3MM - 5MM
BACK PAINTED / LACQUERED GLASS**



**Khasra No. 93/1, (2-12) Alipur, Delhi -110036
Tel : 011-45730999 Mob : +91 7835-016-840 / +91 7835-016-845**

GOLIVE



Glass Double Edger Machine



Automatic Glass Seaming Machine



Glass Washing & Drying Machine



L-shape Automatic Glass Production Line



Automatic Glass Seaming Line

GUANGDONG GOLIVE MACHINERY TECHNOLOGY CO. LTD.

Address : No. 11 ChengYe Road, Fengxiang Industrial Zone, Daliang, Shunde, Foshan City, Guangdong Province, CHINA

Mobile : +86 18033222596 | **E-mail :** situ@golive.cn | **Http://**www.golive.cn

BEST PRODUCTS BEST CHOICE



acron

ARCHITECTURAL HARDWARE INTELLIGENT HARDWARE



Automated Door Sliding System



Floor Springs



Hydraulic Patch



Spider Fittings



Patch Fittings



Glass Routels



Shower Hinges



Sliding Roller Set



Glass Locks

DEALER ENQUARY SOLICITED

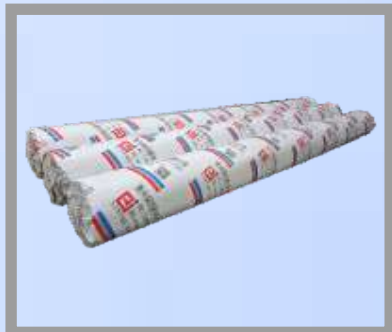
FLOOR HINGE/DOOR CLOSER/PITCH FITTING / DOOR HANDLES/SHOWER HINGE
SPIDER FITTINGS/ AUTOMATIC SENSOR DOOR/ SPIGOT RAILING

ACRON HARDWARE COMPANY

F-17 Office No. 101, First Floor, Subhash Chowk, Laxmi Nagar, New Delhi -110092
email : info@acronhardware.com | www.acronhardware.com | Mob. : 9810193200

CRAYONS™

Innovative Machines for Glass



Eva Film



PVB



**EVA LAMINATION MACHINE
- ELECTRIC**



PDLC Smart Films



Fabrics



**STRAIGHT LINE BEVELING
MACHINE**



Tools




Spares



**GLASS STRAIGHT LINE EDGING
MACHINE**

Add.: Gala No. 01, Batco Transport Compund Opp. Kajupada Lane, Near St. Judge School,
90 ft. Road, Sakinaka, Andheri East Mumbai - 400072 (INDIA)

 [glassshop](#)

 [glassshop_india](#)

 +91 9967805022 | +91 9967144505

 [glassshopindia@facebook.com](#)



Toughened Glass | Laminated Glass | Insulated Glass | Beveling | Stain Glass
Etching-Bend Glass | Shower Cubicles | Glass Furniture | Decorate Mirror
Lacquered Glass | Patch Fitting | Spider Fitting | All type of Glass Fabrication

Authorised Dealer :



Saurabh Agarwal : +91-8106508482 | Abhishek Agarwal : +91-9390628242, 8106612228

GLASS CONCEPTS

#5-9-286/273A Rajiv Gandhi Nagar Industries, Prashanti Nagar, Kukatpally, Hyderabad, India
Phone : +91-9390628242, Call : +91-9490189816 | E-mail : glassconceptshyd@gmail.com

Website : glassconcepts.co.in | www.vedantglasssolutions.in



TM

Shiva-Tuff

Tempered In

SAINT GOBAIN SEVA FRNC

An ISO 9001:2008 COMPANY



The 1st Biggest **Branded Tempering Plant** in Punjab
Tempered by SAINT GOBAIN SEVA FURNANCE



The Pulse of Glass....

Shiva Tuff Advantages :

Tempering Line Maximum Size 2440 X 4880
AN ISO 9001:2008 Certified Company
Jumbo Size Plant
Prompt Delivery

Manufactured By :
Shiva Glass Industries Pvt. Ltd.
Kohara - Machhiwara Road,
Village Rayian, Distt. Ludhiana
E-mail : orders@shivatuff.com
www.shivatuff.com
Ph.: 7087-999991/2/3/4



C o n t e n t s

G.H.A. Info

RNI No. : UPBIL/2013/50547
Vol. : 11 Issue-2,
April - June 2024
www.ghaglassmagazine.com

Publisher & Editor
Sumit Sharma
Sr. Executive Editor
Ms. Tanuja Sharma
Asstt. Editor
Kuldeep Sharma
Legal Advisor
Yogendar Singh Tomar
Graphics Designer
Punit Singh
Camerman
Arvind Kumar

**LISEC AND VENTORA :
THE SOLUTION FOR
UNBEATABLE USE OF
TIGHT SPACES**



**Fenzi Group's Poliver AC
Polyurethane Sealant Earns
Prestigious CEKAL Certification**

**Discover New Growth
Opportunities at GlassBuild
2024 in Dallas**



**VIPROTRON TEMPER
SCANNER 5D
AT THIELE GLASS**



**Register Now for Networking
Events Taking Place
Throughout FGIA 2024
Fall Conference**



**SANCO GLASS SOLUTIONS IN
HOFFMANN GLAS PEINE'S
LIVING WALLS AT NECKARPARK Q8**



G.H.A. INFO. is Owner Publisher & Printer : Sumit Kumar Sharma, **Printed by :** Progressive Offset Printers, Vaishali Colony, Garh Road, Meerut-250 001 and Published at : 224, Vaishali Colony, Garh Road, Meerut-250 001, (U.P.) INDIA
Editor & Publisher : Sumit Kumar Sharma

www.ghaglassmagazine.com

Download Free E-magazine

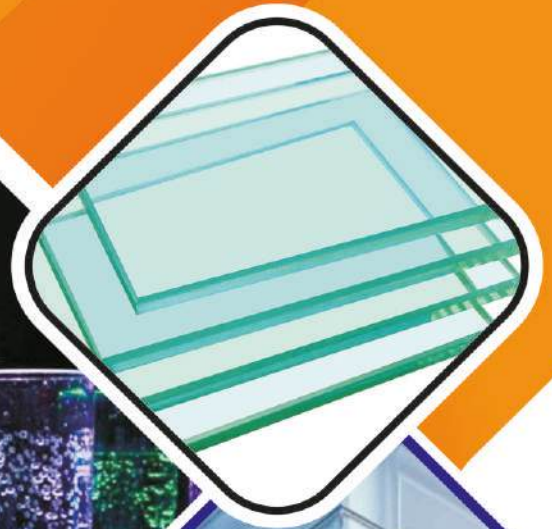
Office : K-4/4029-30, Shastri Nagar, Meerut-250004, (U.P.) INDIA

Mobile/WhatsApp : +91-9027622727 | **E-mail :** ghainfo2012@gmail.com | **Website :** www.ghaglassmagazine.com

Importers of All Types of Glass WE SUPPLY ALL OVER INDIA



Glass Pillars



WHOLESALE DEALERS :

- ★ Clear Float Glass
- ★ Decorative Glasses
- ★ Reflective Glasses
- ★ Color Mirrors
- ★ Mirror from 1.5mm to 5mm
- ★ Extra Clear Float
- ★ Silk Printed Designs
- ★ Pattern Glasses
- ★ Back Painted Glasses or Lacquered
- ★ Temperable Designer Series
- ★ Moru and Flutelite Pattern Glasses
- ★ Glass Pillars
- ★ Glass Blocks
- ★ Architectural Hardware (KYLO)



BHANDARI GLASS COMPANY

5-3-496, Old Topkhana Road, Osmangaunj,
Hyderabad-500012, Telangana, INDIA

M: +91-98496 11100

E: bhandari_glass@yahoo.co.in

Mayurglass@yahoo.in



Mayur Glass House

Part-3, B-9 and 10-B Block, Autonagar, Gajuwaka,
Visakhapatnam-530012, Andhra Pradesh, India

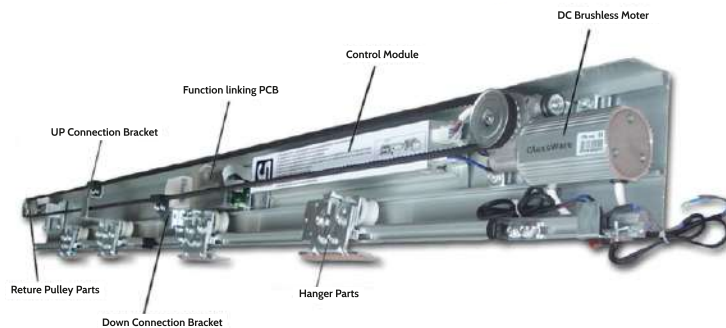
M.: +91-99487 06820, +91-98488 33000

E: mayur_glass@yahoo.in

Info.mayurglass@yahoo.com

GlassWare®

Premium Architectural Hardware



Harsh Jain (Director)
+91-9999014335

Ankit Jain (Director)
+91-8130395851

MANAN INDUSTRIES LLP

Warehouse : Kh. No. 33/12, Main Bawana Road, Samay Pur Badli, New Delhi-110042
Works : GL-42, Ganpati Dham Industrial Area, Bahadurgarh, Haryana-124507
E-mail : mananindustriesllp@gmail.com Web.: www.mananindustriesllp.com
Customer Care No. : +91-8700061600



CloZex®

LEGENDARY RELIABLE
ARCHITECTURAL GLASS HARDWARE

FLOOR SPRINGS & COMBO SETS

5 YEAR GUARANTEE

- Certified Products 
- Designed As Per European Standards
- Premium & Luxury Glass Hardware Concepts
- Elegant Designs
- Prominent Appearance
- Eminent Quality



SS304 PLATES WITH WATER PROOFING GASKET



TOP & BOTTOM PATCH
SS304 PLATES WITH
STEEL INSERTS



PATCH LOCK SS304 PLATES
WITH BRASS KEYS
& CYLINDER



DUAL TONE HIGH
STRENGTH HANDLE
WEIGHT APPROX. 1.2 KG



D LOCKS WITH
BRASS KEYS






SLIDING ROLLERS SS304
A2 AVAILABLE IN
MATT & CP POLISHED



HEAVY DUTY SS304
SHOWER HINGES

ALL GLASS HARDWARE ITEMS & DOOR CLOSERS AVAILABLE

 **Everest industries**
Since 1987

(Office -1) 44 New Industrial Estate Jalandhar, Pb.
(Office -2) Paharganj, Delhi
everestindustries44@gmail.com  97800-34340  

ALL INDIA DELIVERY AVAILABLE

Flat Toughened Glass from the most advanced
Modern Technology Toughened Glass Plant in Noida
Plant Size : 2440 mm × 3660 mm (8'×12')



Radha Tuff

Toughened

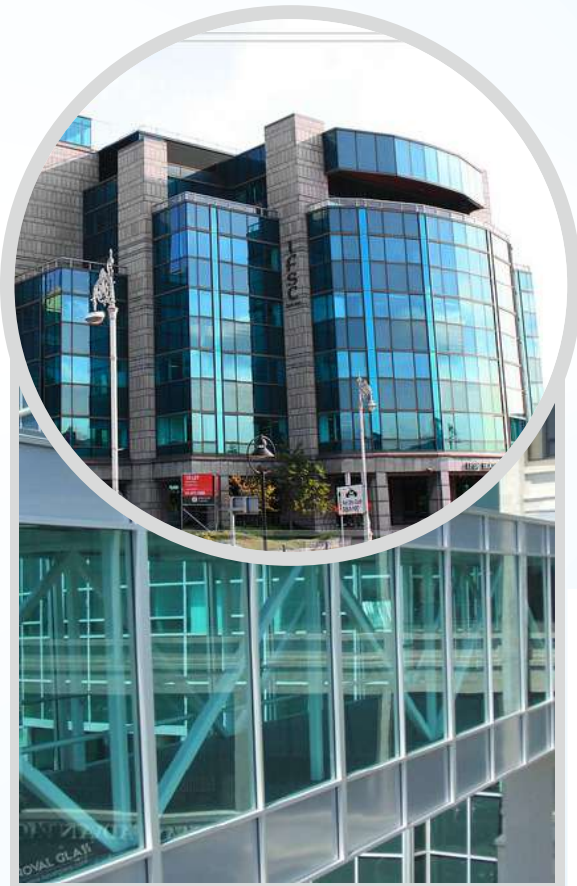
OUR THRUST

- BEST QUALITY
- BEST PRICE
- BEST DELIVERY
- FRIENDLY AMBIENCE

Located in the heart of Noida at Sector-2 just
2 km. from DND flyover and Mayur Vihar, Delhi.

Processors of

- Building Exteriors & Interiors Glass
- Security Glass
- Frameless Glass Doors
- Shop Fronts
- Shower Cubicles
- Bullet Proof Glass
- Furniture Glass
- Sky Light
- Canopies
- Glass Railings
-and many more applications



Manufacturer of : Toughened, Insulating & Laminated Glass

S.G. INDUSTRIES

Works/Office : D-23, 24, Sector-2, Noida 201301 (U.P.)

Tel. : 0120-4320689, 4320889, 4320989, Fax:0120-4320489

E-mail : sgindustriessglass@gmail.com, info@radhatuff.com, guptasharad27@yahoo.co.in

Website : www.radhatuff.com

For any sales enquiry

Mr. Sharad Gupta (M.D.)

Mob. : +91-8800390185,

+91-9810010689

Mr. Kapil Chauhan

Mob. : +91-8800390181



SHRI SHANKAR GLASS INDUSTRIES

AN ISO 9001:2015 CERTIFIED COMPANY

MANUFACTURER / PROCESSOR OF

- TOUGHENED GLASS
- HEAT STRENGTHEND GLASS
- LAMINATED GLASS
- FABRIC GLASS
- DGU GLASS

CONTACT US :

Plot No. B-20, Besids Shivangi Oil Mill, Sirgitti
Industrial Estate, Bilaspur (C.G.) 495001

Mob.: 9827166016, 9981570000, 7772070000

E-mail : shrishankarglassindustries@gmail.com



Make your Dream,
More Secure now with



World Class Flat & Bend Tempered Glass **OROTUFF GLASS PVT. LTD.**

North India's Leading One Wholesale Business House

Authorised Wholesale Dealers & Stockist



Gujrat Guardian Ltd.



Asahi India Glass Ltd.



Saint-Gobain Glass India Ltd.



Gold Plus Glass Industries Ltd.



HNG Float Glass Ltd.



DORMA XL-C®

- Automotive
- Architectural
- Solar
- Furniture
- And Other Diversified Applications
- Architectural Bend Glass



Sister Concern

OM GLASS COMPANY

Corp. Office : G-44, Sector-9, Noida-201301 (U.P.)

Phone : 0120-3067799, Fax : 0120-4359196 | Mobile : +91-9811117510, +91-9311631195

E-mail : ombeer@orotuff.com, omglass2011@gmail.com, Omglassco@gmail.com | Website : orotuffglasses.com

Work : E-62, Site-B, Industrial Area, Surajpur, Greater Noida (U.P.)

Branch Office : Delhi, Haryana, Punjab



Glassma India

...Exclusive Designer Glasses

Office :
5C/9, New Rohtak Road, Near Liberty Cinema,
Karol Bagh, New Delhi-110005 (Inida)

Vishwas Kapoor : 9910098333
Pawan Singh : 9266707810
Mukhtar : 9311145626
E-mail : glassmaindia@gmail.com
Website : www.glassmaindia.com

Our New Range of Designer Glasses



Lacquer Colours



Antique Mirror Collection



Gold leaf and Marble Series

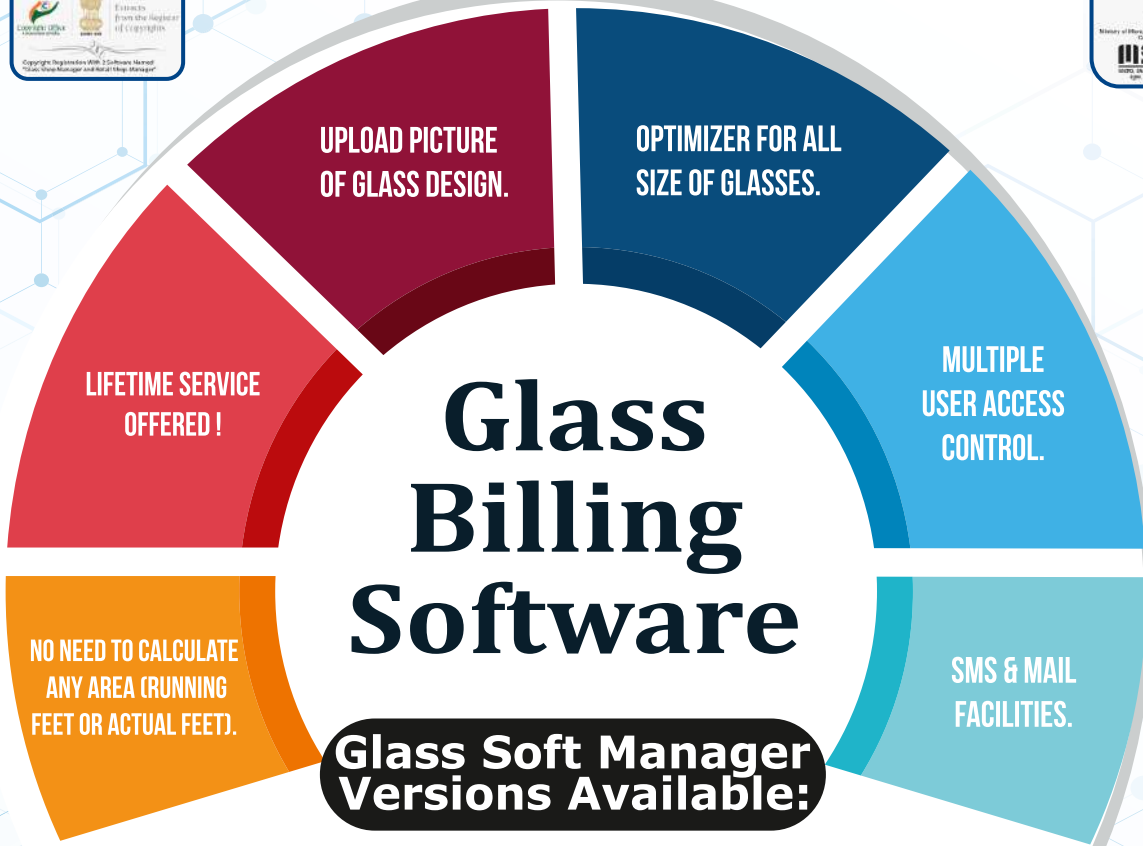


Luster and Titanium Series



Glassma India is one of the leading manufacturer, Importer & Supplier of exclusive Designer mirrors which include Touch Sensor Led Mirrors, 3D Mirrors, Modern Cut Work Mirrors, SS Frame Mirrors & other Economical Imported Mirror Range. Our products are very widely used by Architects & Interior Designers for House Interior, Commercial Interior, Showrooms, Hotels etc.

150+ Satisfied Customers Accross INDIA



Home Edition

**Glass Soft Manager
Offline**

Enterprise Edition

**Glass Soft Manager
+ Hardware
+ Aluminum + Beet**

All in One Edition

**Tally Integration
+ Optimizer
+ G.S.T. Billing**

TESTIMONIALS :



Kanch Ghar

"This Software completely change the business process of Chhattisgarh's Peoples, Time Saving, Quick Calculation, Perfection & Customer Satisfaction, Transparency of Billing. Good job. Thank you."



J.K. Glass Works Pvt. Ltd.

"Without Glass Billing Software we would be losing money & time. This software is amazing and support is second to none! I'm a 100% believer in Proximity IT Solution and after using it for 5 years, that speaks for itself. Thanks for a great system!"



DL Glass Agency

Proximity IT Solution is a great team to work with. They have a great team in technology. I highly recommend Proximity IT Solution to anybody who is looking for a Glass Billing Software that can handle things professionally.

Address : Shop No. - 501, 502, 503, 5th Floor, Karsan Chamber, Near Heritage Hospital, Devendra Nagar, Sec-2 Raipur, CHHATTISGARH - 492009

Contact : 98268 63173, 96691 73173, 95844 63173

E-Mail : support@proximityitsolution.com

Website : www.proximityitsolution.com



Service Area



Proximity IT Solution

"Software will not operate you, you operate the software!"

HISENG MACHINERY

MAKE YOUR
WORKS MORE EASY!

HISENG 海盛

海盛机械, 令你工作更轻松!

- ✓ Automatic measuring glass size
自动检测玻璃尺寸
- ✓ Smart operation
智能操作
- ✓ Supper fast working speed
高速磨边



SPECIALIZED IN :

Double
Edger

Vertical
Edger

Beveler
Machine

Washing
Machine

Drilling
Machine

SHUNDE HISENG GLASS MACHINERY CO.,LTD. ,

佛山市顺德区海盛玻璃机械有限公司

E-mail: sales@hsglass.com.cn www.hsglass.com.cn ☎ 0086-13922166837



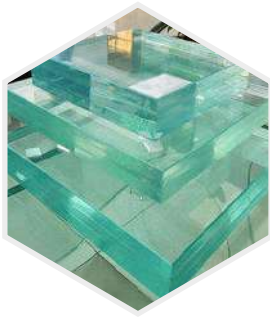
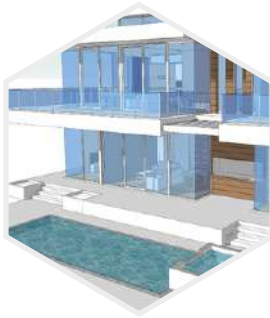
Quality you
can measure

FLOAT GLASS
EN ISO 9001:2008



S. Joginder Singh : 9915816039
S. Ajit Pal Singh : 9803838388

- Toughened Glass
- Laminated Glass
- Insulating Glass
- Security Glass
- Bullet Proof Glass (Armour Glass)
- Wind Shield Glass for Busses & Cars
- All type of Bend Glass



J.K. Toughened Glass Works

#27, J.K. House, New Industrial Estate, Jalandhar (Punjab)
Tel.: 7527006201, 7527006202, E-mail : jktuff@hotmail.com
Website : www.jkglasses.in



MATRIX

T/G

IS 2553 PART1

Float Glass From



CML-6600078612

SAINT-GOBAIN



- Toughened Glass • Heat Strengthened Glass • Laminated Glass • Insulating Glass
- Security Glass • Bullet Proof Glass (Armour Glass)



MATRIX

GLASS INDUSTRIES

R.S. No. 84/10, G.Konduru Mandal, Vijayawada,
 Krishna, Distt.A.P. India-521229
 E-mail : info@matrixglassindia.com
 Web : www.matrixglassindia.com
 Contact us : 7330693457



IMPORTERS OF

- ★ Clear Float Glass
- ★ Decorative Glasses
- ★ Reflective Glasses
- ★ Color Mirrors
- ★ Glass Pillars
- ★ Glass Blocks
- ★ Pattern Glasses
- ★ Extra Clear Float
- ★ Silk Printed Designs
- ★ Back Painted Glasses
- ★ Temperable Designer Series
- ★ Moru and Flutelite Pattern Glasses

Authorised Dealer :



MAHAVEER GLASS COMPANY

Opp. Old Bus Stand, M.G. Road, Vijayawada-520 002 (A.P.)

E-mail : mahaveerglasscompany@yahoo.in

Arihant jain (Montu) : 9440024240 Ankush kumar jain : 9866123143



LISEC AND VENTORA : THE SOLUTION FOR UNBEATABLE USE OF TIGHT SPACES

Discover how VENTORA collaborated with LiSEC to overcome space constraints and connect disparate machines to meet strategic automation goals.

How do you optimise production output within limited space, while also connecting different machines that are physically separated?

VENTORA and LiSEC have found a suitable solution to overcome this challenge that is tailored to the local conditions at VENTORA and forms the basis for achieving the company's strategic automation targets. and problems continue to occur if we don't learn from our mistakes. In my experience, a significant threat to the integrity of a unit is where manufacturers cut costs and cut corners.

VENTORA, which was known as JELD-WEN Australasia or STEGBAR before July 2023, is leading the way in the development and production of doors and windows. With an established reputation for innovative design, unrivalled craftsmanship and outstanding customer service, the company has been providing reliable doors and windows for homes, apartments and commercial buildings for over 50

years.

VENTORA designs and manufactures a wide range of windows, doors, partitions, showers and similar products.

Dave Pakeman has been working as Operations Manager at VENTORA in Rowville, Australia, since 2014 and can draw on decades of experience in the glass industry.

When he started out in the 1980s, he was still being confronted with manual production processes in glass finishing. Following a sideways career move into window production, he returned to find that the world of glass finishing had developed significantly – and had become mechanised and interlinked. Today, the aim is to manufacture products in highly automated processes and deliver them to the end customer as quickly as possible.

A highly integrated plant that supports the machine cells in the production flow by means of slot rack cart logistics and a LiSEC automation

solution is indispensable; this is how the VENTORA plant (back then still JELD-WEN Australasia) became the first highly automated plant for the production of shower doors and more at that time.



How do you maximise production capacity in limited production space?

There's no such thing as impossible! Making the most of limited space requires extensive experience, product knowledge, as well as creativity, outside-the-box thinking and unorthodox ideas when implementing solutions. "LiSEC's Technical Sales Service is highly innovative with its approaches and solutions and has a suitable layout for every challenge," says Dave Pakeman, who is responsible for the complex system network at VENTORA. In addition to the specialists from LiSEC, as a LiSEC automation expert Matthias Schöbl, Head of Software Sales, was also involved in the planning and implementation:

"It is always a pleasure to see this automated plant with so few manual interventions after so many years. The machines, which were initially connected to slot rack carts, and the several extensions with buffer solutions demonstrate the flexibility of the underlying automation solution from LiSEC. The expansion of the glass processing plant to include the production of insulating glass was a logistical challenge. Instead of consistently developing the existing slot rack cart concept, we combined this concept with the available buffer solution. The space

restrictions were resolved by opening automatic buffer areas in the mezzanine level and automatically connecting the insulating glass line. Furthermore, the single glass shipping buffer has made production more flexible, reduced manual sorting work to a minimum, and increased production output. This plant, which I have had the honour of providing support to for over 15 years, demonstrates the successful implementation of expansions and adaptation to the requirements of a dynamic glass market that our customers have to face on a daily basis."

The highlight of VENTORA's production: a buffer store installed on the mezzanine level, which can supply the machines on the ground floor via a LiSEC SHL lifter, thereby offering more options in a limited space. This finally opened up the third dimension in glass finishing.



Specifically, this is what the process at VENTORA looks like:

Downstream of a LiSEC PKL glass storage system with remnant plate storage, there is a GFB for cutting float glass and a LiSEC ESL cutting table with an automatic X, Y, Z breakout system, which in turn is connected to a LiSEC KSR and KSV, i.e. a glass edge seaming machine for rectangles and shapes.

Instead of a normal sorting system, a LiSEC slot rack cart automation system (FWA) was installed, which is docked to various stations: a LiSEC WSL, i.e. a water jet cutting system from LiSEC, as well as various grinding machines and a tempering oven. The tempering oven is

automatically loaded by the slot rack carts, the tempering bed is automatically created, moved into the tempering oven and automatically removed again with LiSEC roller / belt tables (RWF).

The sheets are then sorted, which is where LiSEC's innovative solution for VENTORA begins.

The sheets are either placed in packing sequence on the LiSEC GAL (a packing line that places the sheets on the rack using cord layers), or the sheets are transported up to the mezzanine level, where an additional storage unit is installed, via a LiSEC SHL lifter. Both the LiSEC VSA insulating glass line and a line at the other end of the hall can be loaded in the correct sequence via this mezzanine level. The transport routes therefore offer the option of connecting machine areas on the ground floor via the mezzanine floor without taking up or blocking production space. The buffers have been optimally planned.



How do you connect systems and machines?

Optimised solutions thanks to the right software

"The LiSEC software is outstanding. It allows the entire plant to run in a highly automated manner, and the integration of third-party machines is possible without difficulty," says Dave Pakeman, describing the LiSEC software used. The LiSEC software installed largely covers all process steps, and comprises: order

– for order management or quotation and order processing, cadcam – a LiSEC CAD solution or design program for flat glass processing, prod – a LiSEC software for the organisation and planning of production batches, and ident – which informs the user about relevant details such as breakage and completion reports, as well as LiSEC software tools for shop floor management such as autofab, lineserver, perfectscan and mon.

"When I describe LiSEC's USPs to someone in the industry, certain persuasive points always come up: Automation and software from a single source," says Dave Pakeman. "Everything is connected and we only have one point of contact. From the moment the order is entered, you no longer need to worry about anything – the production batches are scheduled seamlessly! And on top of that, the LiSEC machines are more than just reliable."



A great advantage of a good partnership: support in every respect

VENTORA also found a competent partner in LiSEC when it came to selling their infrequently-used laminated glass system. The search for a buyer was supported and completed with success.

In July 2023, JELD-WEN Australasia became VENTORA and part of Platinum Equity's portfolio of companies.

EXHIBITOR INTERVIEW : VIPROTRON



INDUSTRY INNOVATION AT GLASSTEC 2024: VIPROTRON WILL PRESENT LATEST BREAKTHROUGH IN GLASS INSPECTION TECHNOLOGY

Exhibitor interview Viprottron : quality glass scanners “Made in Germany”

At glasstec 2024 international exhibitors await you with their latest innovations and projects from the (glass) industry - including the German company Viprottron.

Why is glasstec such an important industry event for you?

Sandra Kugler: “glasstec is the most relevant international trade fair for the glass sector and, hence, a ‘must-go’ industry event. For our company glasstec is of great importance since it serves as a driver for innovations, industry development and international cooperation.

Customers still travel here from all over the world to find out about the latest innovations. As a company we gather feedback during and after the trade fair every year to continuously improve and be optimally prepared for the next year – along the lines ‘after the trade fair is before the trade fair’.

The host city of Düsseldorf with all its variety substantially contributes to the success of glasstec. Expert lectures, press releases, stand parties and Düsseldorf’s Old Town ensure memories of a lifetime. The trade fair enables us to address the international press and enjoy great exposure. Germany as the

innovation leader in glass further enhances the relevance of the event, which is indispensable to us and the industry as a whole.”

About Viprotron :

Sandra Kugler: “For 20 years Viprotron has been developing and producing innovative high-quality test equipment “Made in Germany” for the flat-glass processing industry at the Pfungstadt site in Germany. Our highly efficient scanners reliably control the quality of architectural glass worldwide. Viprotron makes possible the efficient automation of in-line quality controls, thereby increasing both quality and productivity. As an OEM partner (Original Equipment Manufacturer) of many leading machine builders, Viprotron has managed to become the technology leader for the quality control of architectural glass.”

Do you already know what you will exhibit at glasstec 2024?

Sandra Kugler: “We are thrilled to present our latest breakthrough in glass inspection technology at glasstec 2024: the Temper Scanner 5D. Placed right at the furnace outlet this scanner measures distortions with up to five camera channels and up to 2 mD resolution. Thanks to smart line scan camera technology and continuous optical triangular light reflection patterns it achieves extraordinary measurement precision. It captures all typical and untypical distortions of tempered glass and delivers precise data in both millidiopters and millimetres for optimal decision-making processes.

Thanks to our modular approach customers can select the individual channels to adapt the scanner to their specific production site and their furnace. Retrofits are possible at any time not only with the Temper Scanner but with any Viprotron scanner. Visitors can look forward to a demonstration of this revolutionary

technology and learn how to markedly improve their product quality.”

What is your vision for your company over the next few years?

Kai Vogel, Owner and General Manager of Viprotron: “Our vision for Viprotron is to sustainably change the glass industry through continuous innovation and technology leadership. We want to offer our customers the best and most efficient solutions and be perceived as a reliable partner. By promoting organic growth and creating an environment that satisfies both our customers and our staff we wish to actively shape the future of glass processing.

Viprotron is synonymous with quality, innovation and customer satisfaction – and we aim to keep it that way in the coming years, too. This vision will guide us while we continue to push the envelope of glass processing technology and make our contribution to further developing the industry.”Gibt es Ihrer Meinung nach wirtschaftspolitische Weichen, die gestellt werden müssen, damit der Standort Deutschland für Sie attraktiv bleibt?

To your mind, are there any economic policy measures needed to ensure Germany remains an attractive location for you?

Kai Vogel, Owner and General Manager of Viprotron: “To us investing in continuing education as and promoting the recruitment of skilled labour from abroad are crucial steps to fight skilled labour shortages. To lighten the burden for business and promote both innovation and growth we need to reduce bureaucratic hurdles. Intense promotion of research and development is key here. Measures to cut high location and production costs must be taken to ensure long-term competitiveness.”



Discover New Growth Opportunities at GlassBuild 2024 in Dallas

Trade shows like GlassBuild 2024 play a crucial role in providing an open forum to network, build relationships, discover new products, gain industry insights, and start shopping for new machinery or technology.

They offer a unique environment where industry professionals can come together, share ideas, and explore the latest innovations. Attending GlassBuild 2024 is essential for your business, as it presents fresh angles and new opportunities to enhance your operations, while also helping you stay ahead in the competitive market.

You only have 2.5 days to accomplish everything. Be strategic about the companies, seminars, and people you network with. Also, take chances and try new companies or

suppliers by planning your route and making appointments ahead of schedule!

Here's why GlassBuild 2024 is a must-attend:

Leverage Face-to-Face Interactions While digital communication is prevalent in current society, face-to-face interactions at trade shows offer unparalleled advantages. According to reports, 84% of trade show attendees develop a more positive opinion of a business after live interactions. Why wouldn't you take advantage of this statistic? These personal connections can lead to future business and enhanced brand awareness, making your participation at GlassBuild 2024 invaluable.

ROI and Cost-Effective Prospecting Meeting potential clients at a trade show is significantly

more cost-effective than traditional methods, such as cold calls and emails. The cost of acquiring a new prospect at a trade show is reported to be 43% cheaper than meeting at their fabrication facility. GlassBuild 2024 provides an excellent return on investment by connecting you with motivated, eager-to-purchase prospects, and influential industry leaders.

Networking Glass Build 2024 is the ideal platform to network with forward-thinking companies and professionals who can help you propel your business forward, whether you're buying or selling. Take every opportunity to connect, exchange information and ideas, ask questions, and collaborate. These relationships can lead to partnerships, new business opportunities, and valuable industry insights.

Continuing Education Engage in continuing education sessions to enhance your business acumen, learn how to reach more customers, and stay up-to-date with industry trends. GlassBuild 2024 offers a variety of educational opportunities, including seminars, where you can expand your industry knowledge.

Explore Cutting-Edge Products and Technologies The trade show will feature the latest products, technologies, and software solutions that are transforming the glass and fenestration industry. From sustainable solutions to advanced automation and AI integration, GlassBuild 2024 is your gateway to discovering innovations that can address industry challenges and drive your business forward. When you stop by A+W's booth, we invite you to explore our latest innovations, such as A+W Smart Delivery (digitize deliveries, save time, and streamline billing), A+W Smart Companion (revolutionizing scanning for glass fabricators: efficient, user-friendly, cost-effective, and future-ready), and A+W Cantor Smart Companion (efficient, user-

friendly barcode scanning app for window and door fabricators for smartphones, boosting productivity).

Boost Brand Awareness Elevate your brand through genuine interactions at GlassBuild 2024, which ties back into networking. These authentic connections will enhance your credibility and influence, while allowing you to spread awareness of your company and services, which provides valuable content for future marketing and advertising efforts.

Analyze the Competition Trade shows offer a unique chance to learn from the most successful companies in the industry, who could be your competition. If this is one of your main goals, take time to analyze their products, services, and marketing strategies to discover what you can integrate into your business if/when applicable. Nowhere else will you have such an opportunity to gain insights from established industry leaders.

Gain Insight on Industry Trends Stay ahead of the curve by learning about the latest industry trends, accomplishments, and advancements. From addressing labor shortages with robotics and advanced machinery to implementing software solutions to replace spreadsheets and paper processes, Glass Build 2024 will showcase how industry leaders are adapting and innovating to meet current challenges.

Conclusion

GlassBuild America 2024 in Dallas is more than just an exposition; it's an unparalleled opportunity to grow, innovate, and connect. By attending, you'll gain access to cutting-edge technologies, sustainable solutions, and valuable industry insights, all while building relationships with key industry players. Don't miss this chance to position your company for success in an evolving market. FYI, these same concepts apply to Glasstec 2024 if you're attending in Düsseldorf, Germany.



VIPROTRON TEMPER SCANNER 5D AT THIELE GLASS

The Next-Generation Complete Tempering Measurement System with Patented True Edge™ Technology

Thiele Glas, a pioneering force in the glass industry since 1989, continues to set new benchmarks for glass quality and innovation. With a strong presence across Germany, Thiele Glas has earned a reputation for excellence in architectural, safety, functional, and design glass solutions.

Renowned for its meticulous attention to detail and bespoke customer solutions, Thiele Glas has always prioritized top-tier quality in its products. This commitment to excellence led the company to partner with Viprotron many years ago for its quality control needs. Viprotron's advanced scanning technology has played a crucial role in upholding the high standards that Thiele Glas is known for among its customers and industry peers.

When it came time to test Viprotron's latest innovation, the Temper Scanner, Thiele Glas was the natural choice for a pilot installation. This collaboration allowed Viprotron to refine its

product with insights from a leader in the glass industry while simultaneously enhancing Thiele Glas's commitment to superior glass production. The pilot system, equipped with three detection channels (all distortions, anisotropy, and white haze), has been a resounding success. The system remains operational at Thiele Glas, continuously delivering exceptional glass quality. This partnership has proven that combining Thiele Glas's industry expertise with Viprotron's cutting-edge quality control technology results in unparalleled glass products.

The final version of the Temper Scanner has since received a comprehensive upgrade, incorporating all five detection channels (including brightfield and reflection) in a new design. Viprotron is excited to win more and more customers with this ultimate glass quality control solution.

Stay tuned for more updates on the Temper Scanner and see how Thiele Glas and Viprotron's quality control solutions are setting new standards in the glass industry.



Register Now for Networking Events Taking Place Throughout FGIA 2024 Fall Conference

The Fenestration and Glazing Industry Alliance (FGIA) is offering several optional events during its 2024 Fall Conference in Minneapolis, MN, September 16-19.

In addition to the annual FGIA Product Showcase, the Association will be hosting an Oktoberfest-themed night at a local brewery, a philanthropic effort to provide school supplies to in-need children and a tour of the Sherwin-Williams Color DesignHouse. Register now for the in-person 2024 FGIA Fall Conference to participate in these networking events and more.

A virtual experience is also available.

“Minneapolis is a vibrant hub of natural beauty and urban sophistication,” said Florica Vlad, FGIA Events Manager. “Known for its Midwestern charm, Minneapolis boasts a diverse culinary scene, excellent shopping and a rich history, making it an ideal location for events and gatherings like the FGIA Fall Conference.”

Product Showcase

On Tuesday, September 17, the FGIA Product Showcase will offer participants the chance to learn about the latest product trends. This reception offers conference participants the opportunity to learn about the latest product trends. Hosted as a hands-on experience, this once-a-year event offers a prime opportunity for supplier members to showcase products and services. Exhibitor opportunities are exclusively available to FGIA Category 1, Category 2 and GPC-only Supplier Members. Learn more about exhibitor options at FGIAonline.org/showcase.

Sherwin-Williams Color DesignHouse Educational Tour

On Monday, September 16, there will be an educational opportunity offered by a Platinum sponsor of the conference. Join industry representatives for the Color DesignHouse Educational Tour, hosted by The Sherwin-Williams Company. The DesignHouse team

consists of experts who are immersed in industry trends and color innovation to offer skilled color advice.

World Vision Backpack Build

During the Fall Conference, participants will be rolling up their sleeves again to fill backpacks with school supplies to equip local under-privileged children with essential tools. This is in partnership with World Vision, a humanitarian organization dedicated to working with children, families and their communities worldwide to reach their full potential by tackling the causes of poverty and injustice. Companies or individuals are invited to sponsor five backpacks at a cost of \$100, 20 backpacks at a cost of \$400 or even 100 backpacks at a cost of \$2,000. FGIA's goal is to

provide 200 filled backpacks to children in the Minneapolis area.

Brewery Tour and Reception

Participants are also invited to attend an Oktoberfest-themed evening at the local Surly Brewing on Wednesday night. Conference participants will celebrate Oktoberfest with beer, food and live music featuring a Minnesota Hall of Fame inductee, the Jolly Huntsmen Polka Band. This networking event is sponsored exclusively by Cardinal Glass, an FGIA company local the area.

Golf Tournament

Also on Monday, the FGIA "Rich and Diane Walker Cup" Golf Tournament will be held at the beautiful Como Golf Course.

ASHIRWAD

GLASS HOUSE

Deepak Aggarwal : 98553-43115
Sudesh Aggarwal : 98553-61115



Specialists in :
Toughened Glass, Lacquered Glass Etc.

3693, Gali No. 1, Model Gram Road, Kochar Market, Ludhianan.
E-mail : aggarwaldeepak727@yahoo.in



OKALUX ENHANCES HORIZON EXPANSION IN JEAN NOUVEL'S ICONIC HORIZONS BUILDING

To complement this visionary architecture, the roof employs Okalux's **OKASOLAR S** system.

Jean Nouvel's architectural genius has been recognized with the Pritzker Prize, his aesthetic vision is known to be challenging yet enriching. The Horizons office building in Boulogne-Billancourt, France, by Ateliers Jean Nouvel, is a testament to his legacy. This innovative structure features three contrasting segments, from a sturdy dark base to a glass

top, designed to expand the horizon and elevate aesthetic perception.

OKASOLARS was the perfect choice for the roof. This specialized daylight system for overhead glazing combines effective solar shading with optimal daylight distribution. The integrated shading system creates a comfortable interior environment, providing uniform illumination throughout the day and year. Moreover, OKASOLAR S helps reduce cooling loads and costs for artificial lighting, enhancing the building's energy efficiency.

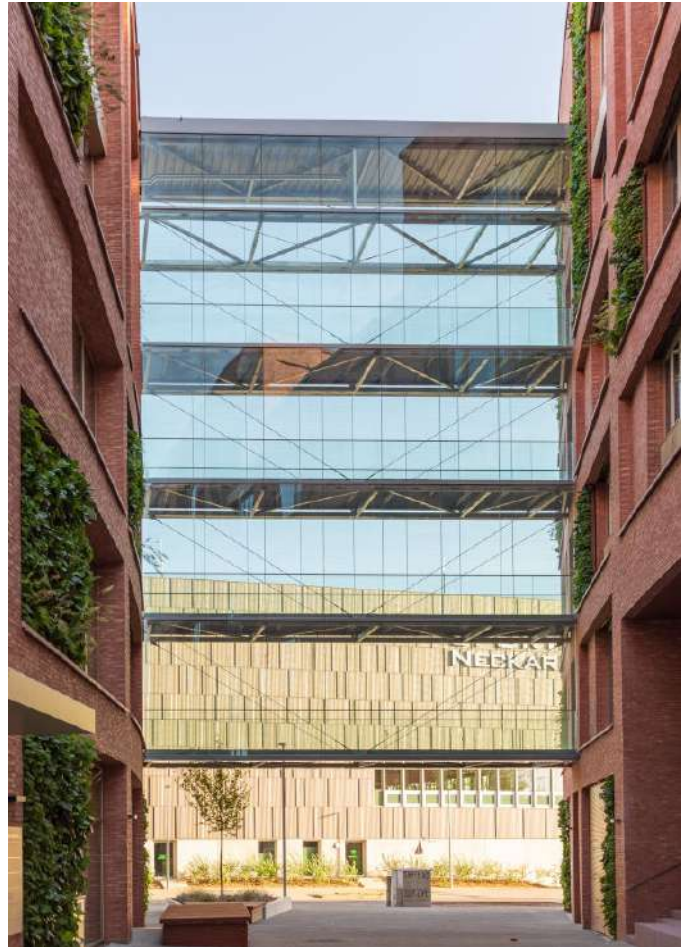
SANCO GLASS SOLUTIONS IN HOFFMANN GLAS PEINE'S LIVING WALLS AT NECKARPARK Q8



Featuring a clinker brick façade and green accents, the building showcases Hoffmann Glas Peine's SANCO glass solutions, which enhance its aesthetic while offering superior insulation and energy efficiency.

LIMA Architekten and SCHWARZ Architekten have designed a striking commercial and office complex at Neckarpark Q8. This project blends modern architecture with sustainable practices, featuring a public ground floor for gastronomy, services, retail and flexible office spaces above.

The building's clinker brick façade pays homage to local architectural traditions and



connects with the nearby historic customs house. Green, irregularly accented façade areas stand out, enhancing the building's look while contributing to better urban air quality.

Generous windows, equipped with Hoffmann Glas Peine's SANCO glass solutions, further define the building's unified appearance. SANCOSSELEKT offers superior heat loss prevention and reduced solar heat gain, while allowing plenty of light into the room so that little artificial lighting is required. In addition, SANCOPlusEN2 ensures excellent insulation with its advanced coating and gas filling.





Fenzi Group's Poliver AC Polyurethane Sealant Earns Prestigious CEKAL Certification

The Fenzi Group is proud to announce that our Poliver AC polyurethane sealant has obtained the prestigious CEKAL certification.

This certification is a testament to the high quality and performance of our polyurethane-based sealants, specifically designed for high-performance insulating glass applications.

Certified Excellence

The CEKAL organization in Paris has rigorously tested and certified Poliver AC, recognizing it for its outstanding technical qualities and exceptional ease of application. This certification underscores our commitment to meeting the strictest industry standards and highlights the exponential growth and market leadership of our Poliver AC sealants.

Innovative Engineering for Insulating Glass

Poliver AC is engineered using top-quality polymers, ensuring it is completely solvent-free and exhibits excellent mechanical properties. This makes it highly resistant to the stresses and strains experienced by glazing systems. Its minimal permeability to water and gas makes it ideal for double and triple insulating glass units, offering superior workability, resistance to humidity, UV rays, and long-term stability.

Versatile and Reliable

Our Poliver AC sealants are highly compatible with a wide range of insulating glass components and can be seamlessly integrated with the latest warm-edge systems. They offer superior adhesive properties in all climatic conditions,

ensuring excellent adhesion to all types of glass and spacers.

Tailored for Efficiency

Poliver AC meets specific operational needs, it enhances the efficiency of production lines and is particularly suited for large-scale manufacturing operations. Its durability ensures constant system stability over time, making it a reliable choice for operators seeking high-quality,

consistent, and internationally certified products.

Commitment to Quality

The Fenzi Group remains dedicated to innovation and excellence in the field of insulating glass. The CEKAL certification of Poliver AC is a reflection of our ongoing commitment to providing the best products in the industry.



हर ग्राहक तक पहुंचेगा
आप का
व्यापार



4th 5th 6th
OCTOBER, 2024

**YASHOBHOOMI (IICC),
DWARKA, NEW DELHI.**

BOOK YOUR SPACE NOW

Mrs. Yakshika Sharma
(North & South India)
+91 83768 33716

Mr. Kamesh Bhardwaj
(West & East India)
+91 82185 16397

www.ienx.in | info@ienx.in

FENZI: BUTYLVER TPS CONTINUES ITS UPWARD GROWTH TREND



Fenzi Group's latest thermoplastic spacer sets new standards in insulating glass efficiency and durability

Butylver TPS, the latest-generation thermoplastic spacer designed by the Fenzi laboratories, epitomizes the Fenzi Group's commitment to the ongoing development of superior-quality products. Designed for the production of highly efficient insulating glass units, it combines technical performance and innovation in the world of industrial automation.

Its capabilities, in terms of workability, thermal performance and lasting durability have made it increasingly in-demand in the warm edge systems market, particularly successful in recent

months in North America, China and Europe, where Mediterranean-area markets continue to drive sales.

Butylver TPS is not just any product; it is a thermoplastic spacer that has revolutionized the industry and set new standards in high-level warm edge performance, perfect adhesion, minimal permeability and long-term stability, making it the first choice in the automated production of high-efficiency glazing.

Given its ease of application – totally automated and entrusted to machinery equipped with the highest technology – it has reached such a level of precision and flexibility that it can be used in the manufacture of perfect double-, triple- and quadruple-glazed IG units, even with

different types of designs. Production process technology, coupled with the reliability and superior quality of Butylver TPS, make it possible to create a true insulating barrier that prevents both the infiltration of moisture and leakage of gas from the IG cavity, contributing like no other technology to maintaining the IG system's thermal performance and structural integrity constant over time. Its broad array of applications – from residential to commercial buildings to fire-resistant windows, automotive and railway transport and commercial refrigeration – all substantiate its

versatility and adaptability.

Butylver TPS is totally compatible with all commercially available application methods and in compliance with the strictest standards around the globe, from Europe to North America, to Japan and China.

These are just some of the characteristics that make Butylver TPS a leading product in the global market for insulating glass solutions, a clear indicator of the winning choice made by the Fenzi Group to invest in research and development of products that ensure exceptional performance and impeccable quality.



DUTT & CO.

Glass Merchants

Dealers :

Laminated Glass, Toughened Glass (For Architectural)
Patch Fitting, Decorative Glass, Mirror, Tinted Glass,
Clear Float Glass, Figured Glass, Putty, Glass Etching Etc.



Silicone & Mirror Tape (Saint Gobain)

Address : Gillander House, 8, Netaji Subhas Road, Kolkata-700 001

E-mail : glass_structure@yahoo.com | Phone : 6529 0374, Tel/Fax : 033-2230 3650



Casuarina House: Your Best Views, Protected by EnduroShield

EnduroShield protects coastal property from salt and stains.

If you've ever walked along the coast, you've probably noticed the homes and buildings with windows that look weathered and stained, as if they've aged a decade in just a few months. This rapid deterioration is a common issue for properties near the sea, where salt mist and hard water stains wreak havoc on glass surfaces. It's a challenge that the owners of Casuarina House know all too well, and it's one they've proactively addressed to protect their investment.

The stunning Casuarina House, located on the beach, needed a solution to protect its

extensive glass surfaces from the harsh coastal environment. The owners sought a way to maintain the pristine appearance of their windows and other glass surfaces without the constant battle against salt mist and hard water stains. EnduroShield Queensland took on the challenge, applying our professional-grade protective coating to 1,292 sq ft (120 sq m) of windows, 431 sq ft (40 sq m) of pool fencing, glass splashbacks, and three shower screens. The application was meticulously performed using a combination of pole system application for the difficult-to-reach second-level windows, spray gun, and manual hand application.

**BLOCK
YOUR
DATES**

ENVISIONING URBAN AESTHETICS
WITH LATEST TRENDS IN
**GLASS PROCESSING
TECHNOLOGIES**




21ST INTERNATIONAL TRADE FAIR ON
**GLASS PRODUCTION, PROCESSING,
TECHNOLOGIES & PRODUCTS**



5-7 DEC 2024
PRAGATI MAIDAN
NEW DELHI



 www.zakglasstech.com | #zakgte

  /zakglassexpo |  /zakgte

ROHIT RATHOD : 08435801085
BHAVAN RATHOD : 09977222722

RATHOD TRADING Co.

Deals in : All Kinds of Float Glass, Fligered Glass & Designer Mirror & Glass Value Addition

Opp. Gujrati School, K.K. Road, Raipur - 492 001 (CG)
Tel.: 0771-4030144, 2225193 | E-mail : rathortrco@yahoo.co.in



DEVESH RATHOD : 09752945222

Sister Concern :

L G TRADERS

Deals in : All Kinds of Float Glass, Fligered Glass & Designer Mirror & Glass Value Addition

Opp. Gujrati School, K.K. Road, Raipur - 492 001 (CG)
Tel.: 0771-4030144, 2234145

GLASS KING

GLASS & MIRROR MERCHANT

Dealer



📍 Benerdokan, P.O.- Raipur, Maheshtala, Kol-141

✉️ gk_glass@yahoo.com ☎️ +91-9830 601 179



9866892986

SRI VENKATA JAYALAKSHMI GLASS WORKS



Mfg. of : Automobile Laminated Safety Glass

WHOLE SALE & RETAIL :- All Type of Automotive Glasses

- All Car Glasses
- All Bus Glasses
- Silicone Sealant
- Rubber Beedings
- All Toughened & Laminated Automotive Glass

Plot No. 271/1, 6th Lane, Autonagar, Vijayawada-7
E-mail : Kanakahrao@gmail.com

9 SUCCESSFUL YEARS



**FLAT AND BEND STABLE AND TROUBLE
FREE WORKING FURNACE
AT ARIHANT SAFETY BANGALORE**

**CUTTING LINE
JUMBO/HALF JUMBO**

SK-Hitech
8×14
8×12
9×16
10×16
10×20



S.K. HITECH GLASS MACHINES PVT. LTD.

Address : 51, Navyug Market, Ghaziabad-201001 (UP)

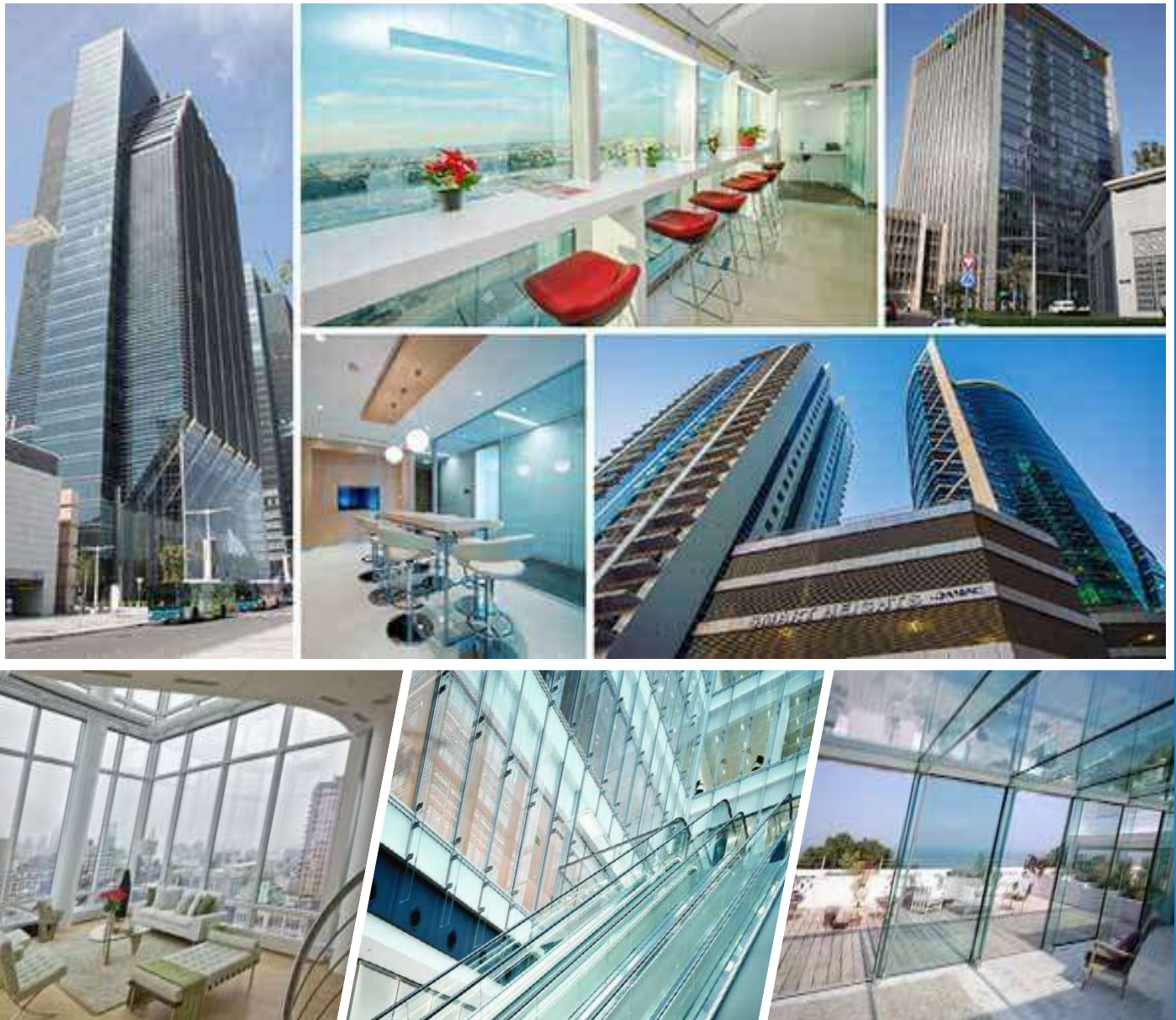
E-mail : saleskhg@mail.com, skghmachines@gmail.com, Web.: www.skghmachine.com

GURDIT SINGH : 98100 13942, 93100 13942, RAKHI : 9821400198

Padmavati Glass Company

Dinesh Kumar Jain
Call : +91-9395550153
Bharat Jain
Call : +91-6281073358

Authorised Stockist :



5-3-481, Old Topkhana Road, Opp., Osmangunj, Hyd-12 (T.S.)
Phone : 66569015 (O), 24612337
E-mail : pgc_hyd@yahoo.co.in



Deals in : Toughened Glass • Frameless Glass Doors • Shop Fronts
• Shower Cubicles • Furniture Glass • Canopies • Glass Railing

Patel Glass Studio

All Types of Glass & Glass Related Solutions

Beside Jalaram Timber Company, KK Road, Janak Bada, Raipur CG.

Ph.: 8770973379



An ISO 9001:2015 Certified Company
NAITRI ENTERPRISE

Manufacturer of Glass Etching Sticker Roll.
 Deals in Glass Machine Accessories & Glass Machineries.

Authorised Agent for India.



NAITRI ENTERPRISE
 107, Shiv Ashish Ind. Soc.-1, Nr. Volks Wagen Show Room,
 New Bamroli Road, Udhna, Surat - 394 210 (Guj.) INDIA.
 Mob. : +91-98795 24439, +91-99090 95004, +91-99254 14822
 www.naitriglasstools.com | E-mail : info@naitriglasstools.com



Event CALENDAR

Notice : In case the organizer changes the dated and place of the exhibition then the G.H.A. Info will not be responsible for it.



D - ORC BUILD
DESIGN ARCHITECTURE BUILDING AND CONSTRUCTION

India's leading Design/Architecture Building & Construction Expo.
Bengaluru International Exhibition Center,
Bengaluru

3-5 May 2024
Bengaluru

2-4 Aug. 2024
New Delhi

Pragati Maidan, New Delhi
INDIA
www.darcbuild.com



Glasstech Mexico
Glass Technology Expo Mexico

Glass Technology Mexico is the Professional exhibition of glass technology in Mexico. the event focuses not only on flat glass, but also on hollow/package glass, doors and windows and aluminum profiles.

9-11 July 2024

Expo Guadalajara
MEXICO
www.glasstechmexico.com



FENESTRATION BAU CHINA
中国国际门窗幕墙博览会

One-stop Fenestration Solution

National Exhibition and Convention Center (NECC)
Shanghai

CHINA
www.fenestration.bauchina.com

16-19 October 2024



glasstec
INTERNATIONAL TRADE FAIR FOR GLASS
PRODUCTION • PROCESSING • PRODUCTS

International Trade Fair for
• Glass Production • Processing
• Products

Dusseldorf
GERMANY
www.glasstec-online.com

22-25 October 2024



UzGlass
Expo for Glass Industry in Uzbekistan

Uz Glass is the professional Glass Technology EXPO in Central Asia. The event focuses on not only flat glass but also hollow/container glass, also the Aluminum, windows and doors industry.

27-29 November 2024

Uz Expo Center,
Tashkent
UZBEKISTAN
www.uzglass.com



GLASS TECHNOLOGY

21st International trade Fair on Glass Production, Processing, Technology & Products.

Pragati Maidan,
New Delhi
INDIA
www.zakglasstech.com

5-7 December 2024



GLASSTECH ASIA FENESTRATION ASIA
11 - 13 DEC 2024 | Ho Chi Minh City, Vietnam

Glasstech Asia, part of the world's prominent trade network, is the leading BAU trade fair which serves as a highly connected platform for the glass industry in southeast Asia.

Ho Chi Minh City
VIETNAM
www.glasstechcanada.ca

11-13 December 2024



glasspro
INTERNATIONAL EXHIBITION FOR GLASS PRODUCTION • PROCESSING • PRODUCTS
INDIA

glasspex
INTERNATIONAL EXHIBITION FOR GLASS PRODUCTION • PROCESSING • PRODUCTS
INDIA

5th International Exhibition for Flat Glass Processing and Products

8th International Exhibition for Glass Production Technologies & Processes.

Bombay Exhibition Centre,
Mumbai
INDIA
www.glassproindia.com
www.glasspex.com

10-12 September 2025



Glasstech Canada
Expo for Glass Technology
Canada

Doors & Windows Canada

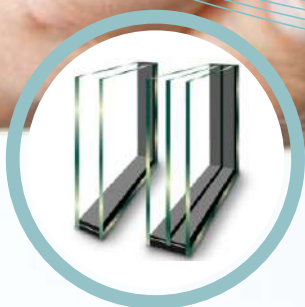
The Glasstech Canada aims to be the professional expo for Glass Technology in Flat and Hollow Glass industry. The Market target is not only Canada but also the entire North America and central America.

Toronto
CANADA
www.glasstechcanada.ca

14-15 May 2025



We make glass
safer & better



INSULATED GLASS



TEMPERED GLASS



LAMINATED GLASS

VITRA INDIA GLASS PVT LTD

Jeevan Deep, G-6, Shyam Centre, Building, Brajkishore Path, opposite LIC, Patna, Bihar 800001

Phone : 097982 61462

vitraindiaglass@gmail.com

www.vitraglass.co.in

SAMRAT GLASS HOUSE

- TOUGHENED GLASS
- FITTING JOB
- BATHROOMS
- RAILINGS



- LED MIRROR
- STANDING MIRROR
- COLORED MIRROR
- FLUTED GLASS

- SPIDER FITTING
- MIRROR CLADDING
- LACQUERED GLASS
- BACK LIGHT GLASS



SANJEEV JAIN - 9417036173

SANKET JAIN - 7589070972



B-XVIII, 2993, JAWAHAR NAGAR, LUDHIANA



MANSSION

GLASS EMPORIUM



Moni
Mob. : +91-9830263127
9836822811
Ph. : 033-22281334



**Spl. : Aluminium Sliding & Patch Fittings Shower
Cubicals & All types of Decorative Glass**

Deals In :

All kinds of Heat Glass, Sheet Glass,
Figured Glass, Toughened Glass & Mirror Etc.

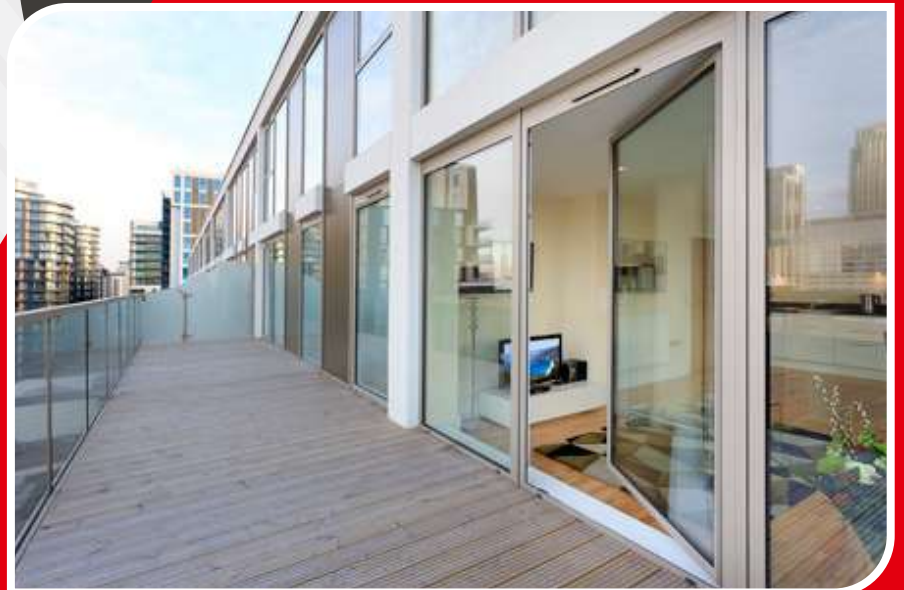
42, Motisil Street, Kolkata-700013

D.L. Glass Agencies

Deals in : All kinds of Building Glass
(Toughened & Laminated Safety Glass)

PRANAV SINGH

Call : +91-9826156986
0771-4023599



Authorised Dealer :



Sister concern :

SBR GLASS SOLUTIONS

Shop No. 131-32, Samta Shopping Arcade, Main Road, Samta Colony, Above HDFC Bank ATM, Raipur (C.G.)

E-mail : pranav267@gmail.com, dl.glass.agencies@gmail.com



We Undertake Frameless,
Toughened Glass, Office Partition,
Doors, Spider Glazing, Shower Encloser
Automatic Sensor Door
Sand Blasting Texture Etc.....
Design Glass also done.

Glass Point

 **complete glass solution**

42, Motisil Street, Kolkata - 700 013

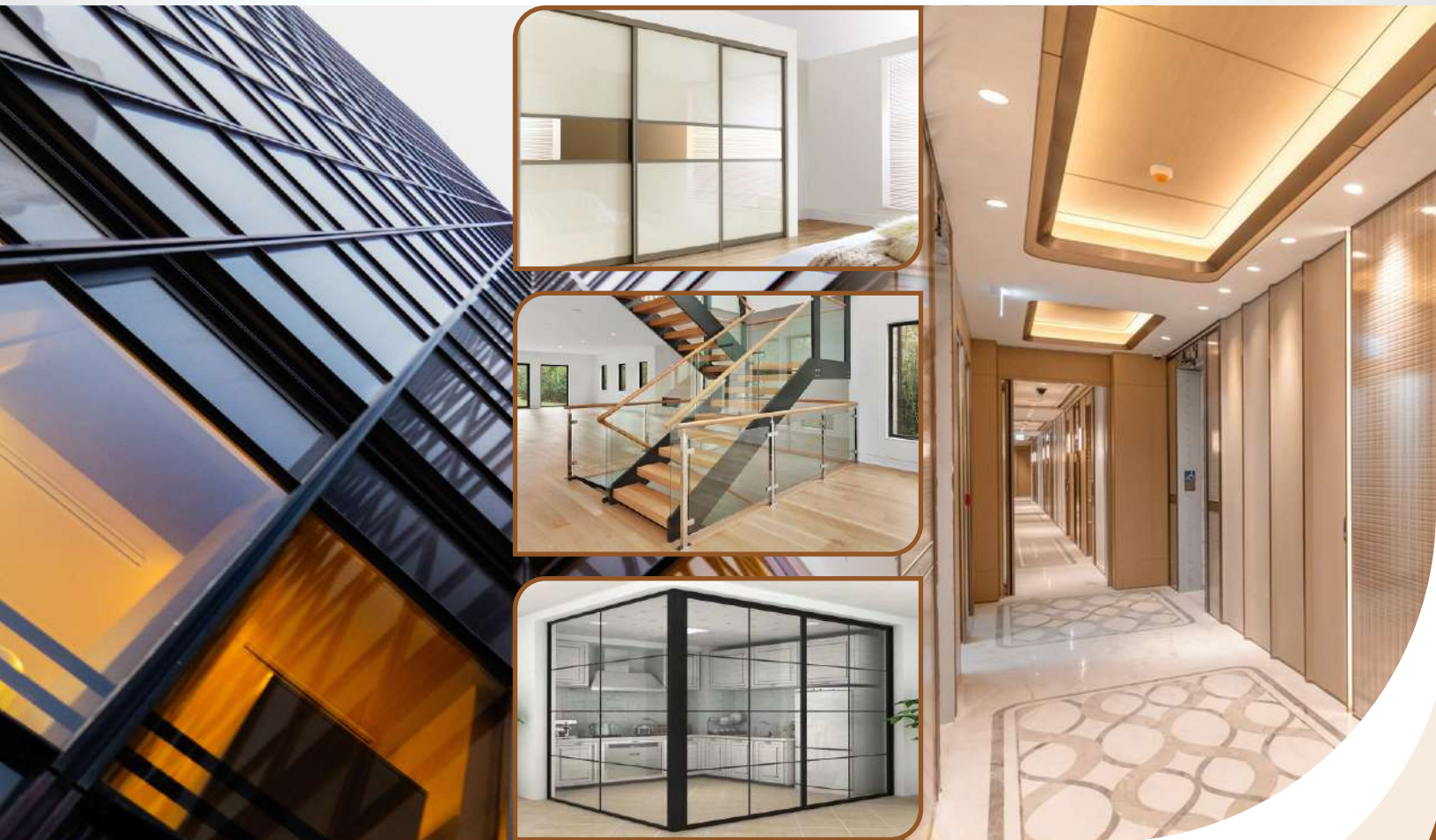
Phone : +91-33-2228 1368, (Meraj) 9748211368 (Minhaj) 98308 81275

E-mail : glass.point2007@gmail.com



Goutam

GLASS INCORPORATION



SPECIALIST IN : ALUMINIUM SLIM PARTITIONS

MORE THAN 15 COMBINATION

Deals in : Toughened Glass • Fabric Laminated Glass • Glass Railing System
• Slim Partition System • Aluminium Wardrobe Profile Etc.

5-3536, Old Topkhana Road, Osmangunj, Hyderabad-500012(T.S.)

Visit us at : www.goutamglass.com, Mob.: +91-4024603524

Tel. Fax : +91-4066745133, E-mail : goutamglass@gmail.com, info@goutamglass.com

Manish Jain +91-9866355133

JS Glass & Plywood

P.D.V.N. Raju (Nani)
8522852260, 2566727 (O)
Sharon (Chanti)
9059347044



Authorised Distributor :



Specialist in :

Glass Etching | Acid Work | Air Burshing | Tuff Glass | Bend Glass
Stain Glass | Beviling | Edge Polishing | Glass Furniture | V. Groove
& All tyes of Aluminium Works

JS Glass & Plywood

44-38-12/31, Srinivasa Nagar, 80 Feet Road,
Akkayyapalem, Visakhapatnam-530016

E-mail : jsglassplywood@gmail.com | Website : www.jsglassconcepts.com



JS Glass & Designs

D.No. : 45-40-65, Main road, Beside Bezawada Home Foods
Akkayyapalem, Near Highway Junction, Visakhapatnam



A. Waheed Khan
(MD)
Salman Khan
+91-7032308416



- Toughened Glass
- Insulated Glass
- Shower Cubicals
- Glass Furniture

Remax Glass Works

Office : 5-3-590, Malakunta, Gosha Mahal Road,
Hyderabad-12, Telangana, INDIA

Mfg. Unit : Plot No. 3/8 B, Sy. No.148

Automotive Park, APIIC Ltd, Kallakal (V),
Toopran (M), Medak(D)-502336

E-Mail : khanawa2007@yahoo.com

Charanjeet Singh
(M) 098554-41393
(S) 0161-2447534
Simranjit Singh
098144-84854



Diamond Glass House

Special Arrangement for : Tuffened Glass Fittings



Exclusive Designs of Fusion Glass Textures Glass Air Brushing Deep Etching, Stain Glass & Beveled Glass etc.

Auth. Retailer :



Kailash Cinema Road, Near Domoria Pull, Civil Lines Ludhiana-141001
Email : singh86simranjeet@gmail.com



Specialist In :

- Glass Design
- Toughend with Glass Fitting etc.



Manufacture of DESIGNING GLASS

Vinod Das
Mob. : +91-9216859583

Processors all types of Exclusive Decorative Glass in Punjab



Exclusive Designs of Etching, Deep Etching, Stain Glass Paintings, Air Brushing, Fusion Glass, Texture Glass & Beveled Glass

Vinod

Glass House



We Also Undertake Outdoor Glass Fitting

69- Lajpat Nagar, Opp. Railway Line, Ludhiana

The New Generation Toughened Plant in Meerut



GLASS 'N' GLASS



- Toughened Glass
- Heat Strengthened Glass
- Insulating Glass
- Laminated Glass
- Decorative Glass
- Bend Glass

MOHD. IRFAN
Call us : +91-9837246871

For any sales enquiry :
+91-8979011114/8, +91-8979022229
Factory : 0121-2704890



GLASS 'N' GLASS

27, Bhawani Nagar, Hapur Road, Meerut City-250002 (UP) INDIA
E-mail : glassnglass2008@yahoo.com, gngtuff@gmail.com



Toughened Glass | Laminated Glass | Insulated Glass | Beveling | Stain Glass
 Etching-Bend Glass | Shower Cubicles | Glass Furniture | Decorate Mirror
 Lacquered Glass | Patch Fitting | Spider Fitting | All type of Glass Fabrication

Authorised Dealer :



ARSHI IBRAHIM & SONS

GLASS AND HARDWARE

Add.: 13 & 21, Bhairav Arcade, Sahu Complex, Pillar No. 16, Exhibition Road, Patna-800001

Mob.: +91-99553 05333, +91-99553 73222

E-mail : arshiibrahimsons987@gmail.com



Glass Straight Line Edging Machine



Glass Straight Line Beveling Machine



Glass Loading And Breaking Table



Glass Corner Grinding Machine



Irregular Glass Shape Machine

**www.rajmarketing.co.in
www.rajglassmachine.com
www.glassmachinetools.com**



Glass Double Edging Machine



Glass Washing Machine



Vertical Glass Sand Blasting Machine



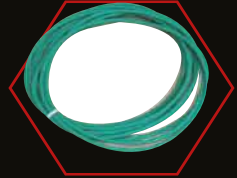
Horizontal Glass Sand Blasting Machine



Glass Drilling Machine (Automatic)



CNC Multi Function Glass Cutting Table



Glass Cutting Line



Raj

MARKETING

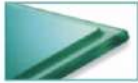
Darshan Jain
9320223355

Virag Jain
7222866661

Dilip Jain
9322030222

B/1005, Venkatesh Shanti CHS Ltd,
Balaji Complex, 150 Feet Road, Bhayandar (W)
Thane - 401101 (Maharashtra)

All Kinds Of Glass Machinery & Spare Parts Under One Roof



6 Spindles Glass Round Edging Machine

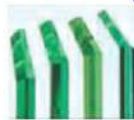


Glass Straight Line Beveling Machine with Automatic Lubricating System



Available in 9 Spindles, 10 Spindles & 11 Spindles

Double Glass Drilling Machine (Heavy Duty Model)



Glass Straight Line Edging Machine with 45° with Automatic Lubricating System



Available in 9 Spindles, 10 Spindles & 11 Spindles

Glass Vacuum EVA Laminated Machine with Five Layers with Low Power Consumption (Available in LPG Model also)



EVA Film



Horizontal Glass Washing & Drying Machine



Special Model for Low-e Glass also available

Manufacturers of

- ☆ BI Glass Tempering Furnace ☆ BI Glass Lamination Line ☆ BI Glass Insulating Line
- ☆ BI Glass Cutting Line ☆ BI Glass Washing Machine ☆ BI Glass Beveling Machine
- ☆ BI Glass Grinding Machine ☆ BI Glass Drill Machine ☆ BI Glass Shape Machine
- ☆ BI OG Edging Machine ☆ BI Sand Blasting Machine ☆ BI Belt Grinder
- ☆ BI Glass Diamond Wheels ☆ BI Polishing Wheels ☆ BI Resin Wheels
- ☆ BI Glass Drill Bits ☆ BI Water Jet Cutting Machine

Made in India Glass Tempering Furnace



Cutting Line with (Loader, Cutting Table & Breaking Table)



Diamond Wheels, Polishing Wheels & Resin Wheels



Drill Bits



Glass Bending Furnace
with 90° Bend, with Better Efficiency
LPG Model also Available



BHAMBRA INTERNATIONAL

111/G, DLF Industrial Area, Phase-1, Faridabad-121004 (Hr.) INDIA
Ph.: +91-95129-2250673, 2250914 • Cell: 9810020824, 9999130078

E-mail: bhambrainternational01@gmail.com
Website: www.bhambrainternational.com



Biggest Spider Works in A.P. Completed by SKML GLASS

- ◆ VUDA CHILDREN THEATER
- ◆ GITAM MEDICAL COLLEGE
- ◆ RAMA TALKIES

Specialist in :

● Original Stain Glass	● Spider Fitting
● Automobile Glass	● Etching, Beveling
● Glazing, Toughened	● All type of Value Addition Glass Works
● Patch Fitting	



Auth. Distributor of : South Glass Pvt. Ltd.



S.K.M.L. GLASS HOUSE

#32-1-200/4, Srikanya Lodge Complex, Bowdara Road, Opp. SRMT, VISAKHAPATNAM-530 004
E-mail : skmlglasshouse@gmail.com

Branch Off. : Shop No. 3, Babu shopping Complex, Old Gajuwaka, Vishakhapatnam-26
Mr. Srinivas +91-9848582707 L. Anand Raj +91-9866055703

Pavan Glass Gallery

Your Imagination is our creation

Chetan Patel
+91-9098952416
Hitesh Patel
+91-9752524416



Deals In :

- All kind of clear & designer float glass
- Toughened Glass
- Insulated Glass
- Bevelled Glass
- Textured Glass
- Laminated Glass
- Glass Hardware
- Edge Polish
- Shower Cubicles
- Acid Work Etc.



Head Office : Opp. Patidar Bhawan, Timber Market, Fafadih, Raipur-492001 (C.G.)
E-mail : pavanglassgallery1616@gmail.com
Mobile : +91-9098952416, +91-9752524416

AGGARWAL GLASS HOUSE

**PUNJAB's Leading One
Wholesale Business House**

Authorised Wholesale Dealers & Stockist



Gujrat Guardian Ltd.



**Gold Plus Glass
Industries Ltd.**



Asahi India Glass Ltd.



**BHARAT GLASS
TUBE LIMITED**

DISTRIBUTOR :



- Glass Beveling
- Glass Polishing
- Toughened Glass
- Lacquered Glass
- Clear Glass & Mirror (all size available)
- All type of architectural glass

**All Type of Architectural Glass Works
Under One Roof**

Firozpur Road, Near Umbera Homez, Vill. Gahaur, Ludhiana (Punjab), INDIA

E-mail : varun.agg23@gmail.com

Varun Aggarwal Mob. : +91-98150 16300

Mannat

ALWAYS SPRAY ON TIN SIDE OF GLASS

BACK PAINT SYSTEM

Two component solvent based opaque coating. It has excellent scratch resistant adhesion. Available in more than 60 shades. Pearl & Fluorescent colours also available. Only PU Thinner to be used for dilution.

Available in :

- OPAQUE • TRANSPARENT • METALLIC
- FLUORESCENT • PEARL EFFECT

Supreme



PU CLEAR

For Glass and Ceramic

Two pack coating with a ratio of 4 : 1. Used as a pre-coat of digital printing on glass and ceramic



MIRROR EFFECT COATING

Transform Clear Glass closest to Mirror
Ideal for Glass Designing

Recommended for designing
Apply 3 coats with spray gun at low pressure
Black back paint after 5 hours of coating



Frosting Effect Coating

SEMI-TRANSPARENT FINISH

Creates a frosted glass finish with direct application on Glass

Two pack solvent based system to replace acid frosting. Tinter can be added to get different colour.



White+

Coating with Extra Whiteness

To achieve more whiteness on normal glass



UV Glass Adhesive

Commercial for small Glass to Glass

- SH 110 - For sticking Glass to Glass
- SH 128 - For sticking Glass to Metal
- SH 133 - Edge to surface of Glass
- Gel - Thicker Glue



AIR BRUSH GLASS COLOURS

Available in one pack base which should be brushed without adding any type of thinner to get sand blasting effect for colours Gold and Silver.

1 part ratio and 2 part base tinter.
Ready colour for Sand Blasted effect.



PRIMER

Fast Drying Precoat

Can be applied with cloth.
Thinnest coating recommended.

TOP COAT

UV Coating for protecting Digital Printing on Ceramic



ENHANCER

VALUE ADDED PRODUCTS ON GLASS

G.H.A.-INFO (April-June 2024)

1308, Sai Niketan, 345 Mount Road, Near GST Tax Office, Mazgaon, Mumbai 400 010. Cell : 93212 90705
mannatcoating@gmail.com • www.mannatcoating.com

SK Glass Machines (India) Pvt. Ltd.

Pre Processing Machines and Solution

Glass Straight Line Edging Machine (SKE-Series)
(SKE-Series)



Glass Straight Line Beveling Machine
(SKB-Series)



Horizontal Glass Double Drilling Machine
(SKD-Series)



SKWJ-3112
Waterjet Cutting Machine



LOW E PLC
Glass Washing Machine



SKHSB-2200
Horizontal Sand Blasting Machine



Phoenix-2615
Horizontal CNC Work Center Machine



SKD-1508 PLC
X & Y Automatic Glass Drilling Machine



Product Highlights :

- Vertical Glass Straight Line Edging Machine
- Vertical Glass Straight Line Beveling Machine
- Horizontal Glass Washing Machine
- Horizontal Glass Drilling Machine
- Waterjet Cutting Machine
- Horizontal/Vertical Glass Sand Blasting Machine
- Horizontal Glass CNC Work Center Machine

HIGH PRESSURE TOP CONVECTION FURNACE FOR TRIPLE SILVER SOFT COATED GLASS LOW E = 0.018

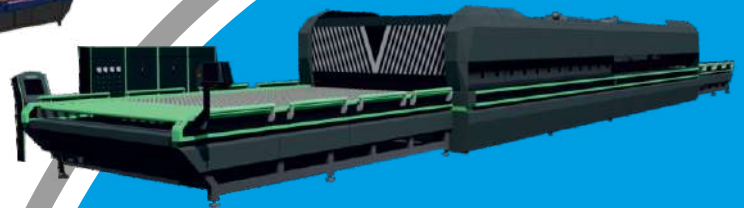
MORE THAN 120 FURNACES INSTALLED WORLDWIDE



Horizontal Top Forced Jet Convection Glass Tempering Furnace



SKTFC-Top Forced Convection Machine



5th Generation High Pressure Top Forced Convective Furnace

- Capability to Produce Triple Silver Coated Low-e Glass (e=0.01)
 - Unique & Intelligent Siemens Control Heating System.
 - Special Forced Convection Heating Profile Technology.
 - PLC and VFD by Siemens Germany.
- Both Flat and Bend option Available



- Model No: 8x14 Ft**
- Model No: 9x14 Ft**
- Model No: 9x16 Ft**
- Model No: 10x14 Ft**



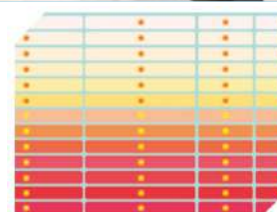
Siamars S7 PLC



Super Low-E Glass (0.01)



Intelligent Control



Fine Heating Matrix



Faster Production



S.K. GLASS MACHINES (INDIA) PVT. LTD.
Factory
 D-9, Meerut Road, Industrial Area,
 Ghaziabad, Uttar Pradesh-201001 INDIA

Domestic Sales : +91-9310013944
 International Sales : +91-9873926105
 E-mail : sales@skglassmachines@gmail.com
 www.skglassmachines.com



SK Glass Machines (India) Pvt. Ltd.

EVA Film for Laminated Glass

Your Domestic Source for Glass Interlayer and Glass Machinery

Autoclave Free Glass Laminating Machine

EVA | PVB | SGP | PDLC | FILM FOR INTERIOR & EXTERIOR LAMINATED GLASS



Available Sizes:

6X12 Ft

7X12 Ft

8X12 Ft



Forced Convection Heating Technology

THE NEW LEVEL OF EVOLUTION

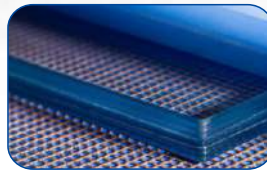
EVA Roll

Color EVA | PVB Film

Teflon Roll

Decor Laminated Glass

Switchable PDLC Film Roll



Specifications:

Thickness (mm)	0.25 / 0.38 / 0.76 / 1.52 mm
Width (mm)	1830 / 2000 / 2250 / 2440 / 2500 mm
Roll/ Length (mtr)	50 / 100 / 150 M
EVA Colours	Indoor Clear, Extra Clear Outdoor, Super Transparent, Milky White, Frosted, Dark Green, Olive Green, Light Green, Yellow, Dark Blue, MEDITERRANEAN Blue, Light Blue, Orange, Euro Bronze, Dark Brown, Black & Light Brown etc.



S. K. GLASS MACHINES (INDIA) PVT. LTD.

D-9 Meerut Road Industrial Area, Ghaziabad, UP
+91 9310047273, +91 81300 92790

sales.skchevron@gmail.com, sales@skglassmachines.com



Whatsapp Us:
+91 9310047273

Metal Mesh | Fabric | Inserts | PET Film | PDLC | EVA | PVB | Dichroic | PVC Mesh | SPD | LCD EVA | Smart Blinds | SPG | LED Liquid Film

S.S. Glass Gallery Pvt. Ltd.



Also Deals in clear Float, Mirrors, Tinted Glass and Automobile Toughened Glass, Shower Cubicles, Shop Fronts, Spider Glazing Etc.

Authorised Distributor :  **OZONE™**
FOR A SAFER WORLD

Channel Partner :  **SAINT-GOBAIN**
The Future of glass since 1665

Dealers of :

- Saint Gobain ● Asahi India Float Glass ● Modi Guard Float Glass
- Toughened Glass ● Laminated Safety Glass



Specialist in :

- **Toughened Glass**
- **Total Turnkey Solutions**
- Engraving
- Etching
- Staining
- Fusion Glass Bending Etc.

S.S. Glass Gallery Pvt. Ltd.

9/1, Motisil Street, Kolkata-700 013, West Bengal, India
Ph.: +91-33-22282122, +91-7003068881
E-mail : ssglassgal_cal@yahoo.co.in
website : www.ssglassgallery.com

Rohit Sinha
+91-9051363654

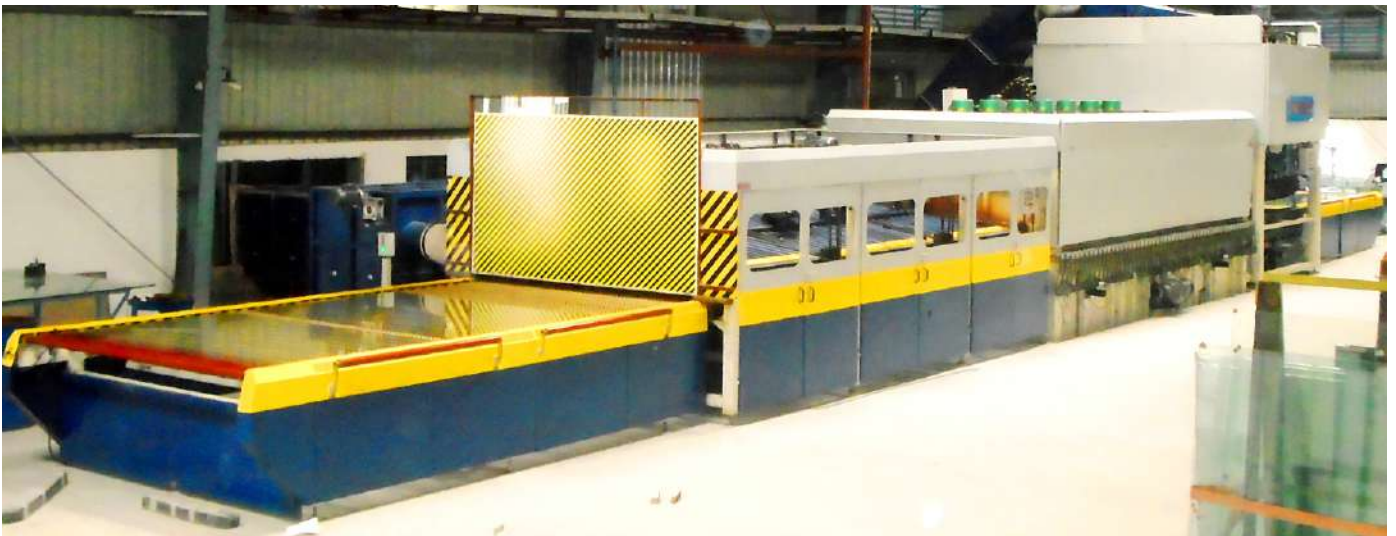
Glass House

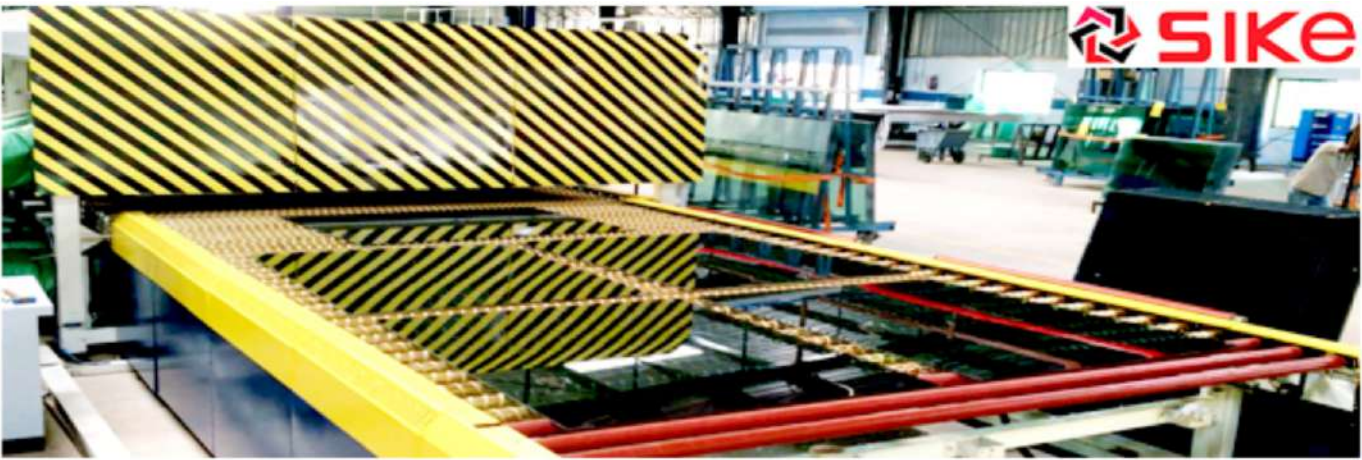
5 Motisil Street, Kolkata-700013, (W.B), INDIA
Phone : +91-33-46024839
Mob. : +91-9836351152
E-mail : glasshouse.motisil13@gmail.com

WE ARE MANUFACTURERS OF

- **FLAT TEMPERING PLANT**
- **BEND TEMPERING PLANT**
- **FLAT AND BEND TEMPERING PLANT COMBINED**
- **HEAT SOAK / AUTOMATIC LOADERS FOR CUTTING MACHINES**

**FOR CLEAR TINTED REFLECTIVE & SOFT COATED GLASS KT, ST, SKN
(DOUBLE SILVER GLASS) TRIPLE SILVER GLASS (SOFT LOW-E)
FLAT & BEND GLASS TEMPERING FURNACE**





- 3.2 CAR SIDE GLASS (OEM QUALITY)
- VOLVO SIDE BUS GLASS
- ARCHITECTURAL GLASS

- COOK TOP GLASS
- 2 MM – 4MM SOLAR GLASS
- BEND GLASS FOR BUILDING

AVAILABLE IN INR ON GST PRICE

LOCAL SERVICE & LOCAL WARRENTEE (IN INDIA)

OUR VALUED CUSTOMERS

- ↻ JAY KHODIYAR, AHMEDABAD
- ↻ FUTURE TUFF, AHMEDABAD
- ↻ KRISHNA TOUGH, AHMEDABAD
- ↻ BIG POWER TOUGH, AHMEDABAD
- ↻ TUFF GLASS, INDORE
- ↻ R & B GLASS, RAJKOT
- ↻ TPRS ENTERPRISES, PONDYCHERRY
- ↻ TPRS ENTERPRISES, DHARWAD
- ↻ ARIHANT SAFETY, BANGALORE
- ↻ MARUTI INDUSTRIES, PUNE

- ↻ SABAQAH ZUJAJ ALZUJAJ EST, RIYADH
- ↻ J K TOUGH , JALLANDHAR
- ↻ SWASTIK GLASS, SONEPAT (EX-GOLD PLUS)
- ↻ AMAFHH GLASS , MUMBAI
- ↻ INFINITY GLASS INDUSTRIES, FARIDABAD
- ↻ AMIT GLASS PVT LTD , JAIPUR
- ↻ RAMDEV INTERPRISES, MUMBAI
- ↻ MICO SAFE, MEERUT
- ↻ SOLARIO TUFF'N GLASS PVT LTD, SONEPAT
- ↻ AAIMAA GLASS CORP, HYDERABAD & MANY MORE



SIKE CHINA / S K GLASS INDIA

Email: sales@siketemp.com, marketing@siketemp.com Web.: www.siketemp.com/ www.skglassmachines.com
 China: +0086-189 24899 177 / India +91-9310013944, 9821400198

GLASS AUTOMATIC LOADERS JUMBO n HALF JUMBO



Double Edger Loader



Multi Functional Manual Cutting Table with Air Cushion & Breaking Bars



Glass Automatic Loader



Glass Automatic Loader



Break Out Table



Break Out Table with Tilting Arms



Glass Automatic Loader

- ◆ MORE THAN 450 MACHINES WORKING IN WORLD WIDE
- ◆ LOCAL SERVICE ◆ *FREE INSTALLATION IN INDIA ◆ 3 YEARS OPEN WARRANTEE
- ◆ AVAILABLE IN INR/ IN GST PRICE ◆ READY AVAILABLE

CAN MATCH WITH ANY INTERNATIONAL BRAND OF GLASS CUTTING MACHINE

OUR VALUED CUSTOMERS

- | | |
|------------------------------|---------------------------------|
| ⇒ GSC GLASS LTD | ⇒ JAIN GLASS SOLUTION, SURAT |
| ⇒ TPRS ENTERPRISES PVT LTD | ⇒ GEETA GLASS, INDORE |
| ⇒ RUBINE GLASS PVT LTD | ⇒ N. N. SAFETY, HYDERABAD |
| ⇒ R & B GLASS, RAJKOT | ⇒ MANCHU TOUGH, CHENNAI |
| ⇒ PITRUKRUPA GLASS, HYDRABAD | ⇒ NANDI TUFF, HYDERABAD |
| ⇒ JIVAN INDUSTRIES, RAIPUR | ⇒ HYDERABAD SAFETY, HYDERABAD |
| ⇒ AURUM SAFETY, BAHADURGARH | ⇒ JAY KHODIYAR, AHMEDABAD |
| ⇒ KRISHNA TUFF, AHMEDABAD | ⇒ OLUMPUS, LUCKNOW |
| ⇒ HARDWYN GLASS, DELHI | ⇒ TUFF GLASS, INDORE |
| ⇒ ASAHI INDIA GLASS LTD | ⇒ AAIMAA GLASS CORP, HYDERABAD |
| ⇒ WELL TUFF, DAMAN | ⇒ J K TOUGH, JALLANDHAR |
| | ⇒ ARIHANT BANGALORE & MANY MORE |



SIKE CHINA / S K GLASS INDIA

Email: sales@sikeloaders.com, marketing@siketemp.com Web.: www.sikeloaders.com/ www.skglassmachines.com

China: +0086-189 24899 177/ India +91-9310013944, 9821400198

- Floor Spring
- Glass Connector
- Shower Knobs
- PVC Seal
- Wooden Sliding Fittings
- Glass Sliding Fitting
- Pipe Fittings
- Glass Door Handle
- Patch Fittings
- Glass Door Locks
- Shower Handle
- Glass Suction Lifter
- Glass Sliding Handle
- Shower Hinges
- Spider Fitting

Architectural Glass Fittings



Rolls Hardware LLP

Nirmal Avior Bldg, Upper Ground Floor, Shop No. 10,
Next to Deep Mandir Theatre, LBS Road, Mulund West, Mumbai-80
Phone : 022-49719300
Mobile : +91-9820572241 (Rajesh), +91-9819059496 (Bind Lal)
E-mail : rollshardware@gmail.com, salesrollshardware@gmail.com
web : www.rollshardware.com

Dealership Enquiry Solicited



K.G. & SONS
Float and Architectural Glass

S.K. Bansal
Sushil Goyal
+91-99150 30981

DORMA XL-C®



Auth. Dealer



Sister Concern
K.G. Bansal & Sons
DORMA XL-C®

SCO 846, Kalka Road, Manimajra, Chandigarh
Phone : +91-1722734482, 1722732248, 1725045482
E-mail : kgandsons.chd@gmail.com



DZM9
GLASS EDGING MACHINE



DSM20
GLASS DOUBLE EDGING LINE



DK3019
GLASS GROOVING MACHINE



Company Airscape



DEWAY MACHINERY CO.,LTD

Add: Longshi Industrial Park, Wu Gui Shan, Zhongshan, Guangdong, China
Post Code : 528458 Tel : +86-760-88785278 Fax : +86-760-88785161
<http://www.zsdeway.com> E-mail: sales@zsdeway.com

Contact Person :

Mr. Lee Email: lee@zsdeway.com

Tel: +86-13925346028 wechat: leevinglee

Ms. Jenny Email: jennyzhong@zsdeway.com

Tel: +86-18028338683 wechat: zh18028338683



VETRO LOGIC
INTERNATIONAL

INDIA'S OFFICIAL SERVICE PARTNER

Contact Person : **Biswajit Mondal** +91 9867441731

20/B/503, Regency Estate, Kalyan Shil Road,
Dombivli (E), Mumbai - 421 201, India
Email : mondal@vetrologic.com / mondal.personal@yahoo.com



Authorised Dealer :



Rathod **GLASS AGENCY**

Deals in : All type of Clear Glass, Tinted Glass, Reflective Glass, Pattern Glass, Toughened Glass, Lamination Glass , DGU Glass, Mirror Glass , Architectural Hardware, Railing Hardware, Silicon Etc.

Sister Concern : RATHOD ENTERPRISES
Whole Sale & Retail

Add.: Shop No. -3, Raipur Ice Factory Building, Fafadih, Raipur (C.G.)
Email : rathodglassagency@gmail.com

Bhavesh Rathod : 9300001028
Manish Rathod : 9329101028



An ISO -9001-2008 company

J.K. International

(An ISO 9001-2008 Co.)

Regd. Off. : 46, New Industrial Estate, Lamba Pind Chowk,
Behind Chara Mandi, Jalandhar-144001 Punjab (INDIA)

Unit-I : 18, Industrial Area, Bai Attarian, Kandrori,
Distt-Kangra, (H.P), India.

Unit-II : Reru-Dhogri Link Road, Jalandhar (Punjab), Indian.

Phone : 91-78146-53907, 91-93174-53911

E-mail : sales@jkglasses.com, jkglasses@gmail.com, Website : www.jkglasses.com



Our Product Range :



Insulating Glass



Bend Glass



Toughened Glass



Laminated Glass



Wind Screens



Decorative Glass